



Percutaneous Left Atrial Appendage Occlusion in Patients With Non-valvular Atrial Fibrillation – Are Indications Expanding?

Paul A. Friedman, MD

Mayo Clinic
Rochester, MN, USA

Disclosures

Sponsored Research

- SJM

Intellectual Property Rights

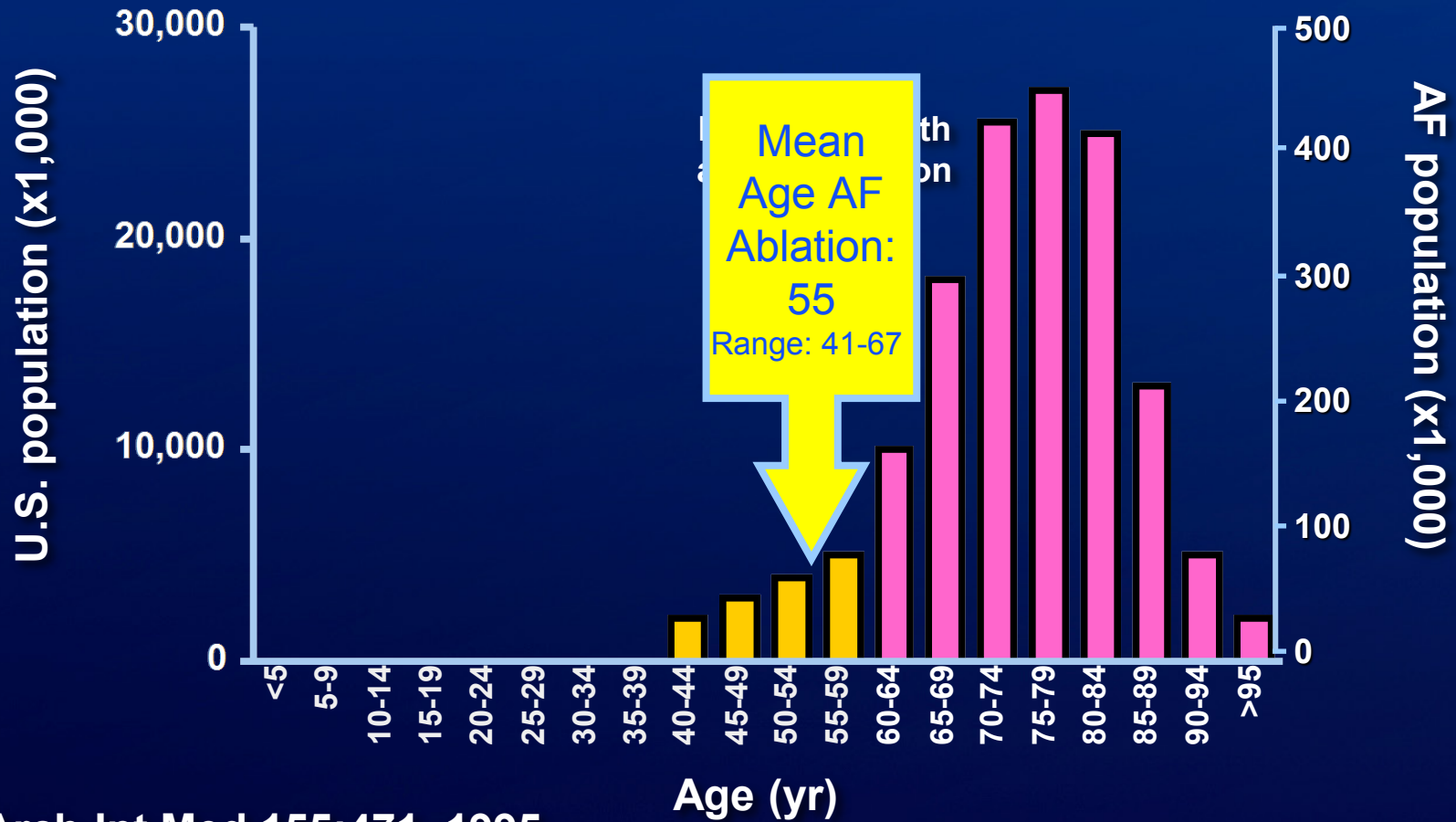
- Bard EP
- Hewlett Packard
- **Aegis Medical – co-inventor of device; Mayo Clinic and inventors may benefit from commercialization, but not from use in patients at Mayo Clinic**
- NeoChord
- Preventice

Consultant

- Leadexx
- Medtronic
- Boston Scientific

Aegis Medical (Vancouver, Canada) has an agreement with Mayo Clinic whereby Mayo granted Aegis an exclusive license to Mayo intellectual property. Mayo Clinic owns equity in Aegis. Mayo Clinic and Samuel J. Asirvatham, M.D., Charles J. Bruce, M.D., Paul A. Friedman, M.D., and Susan B. Johnson, B.S., may receive royalty payments pursuant to this agreement. However, neither Mayo Clinic nor Drs. Asirvatham, Bruce Friedman, or Susan B. Johnson will receive any compensation for the use of this product with Mayo Clinic patients. Drs. Bruce and Friedman received research support from the Mayo Discovery Translation Award.

Age Distribution of People with AF



Arch Int Med 155:471, 1995



Meta-analysis AF trials, Calkins, Circ Arrhythm 2009
Including >6900 patients

CHA₂DS₂VASc Score and Stroke Rate

Adjusted Stroke Rate According to CHA2DS2-VASc score

Risk factor	Score
Congestive heart failure/ LV dysfunction	1
Hypertension	1
Age ≥75	2
Diabetes mellitus	1
Stroke/TIA/thrombo-embolism	2
Vascular disease	1
Age 65-74	1
Sex category (ie, female sex)	1
Maximum score	9

CHA2DS2VASc score	Pt (n=7,329)	Adjusted stroke rate (%/yr)
0	1	0
1	422	1.3
2	1,230	2.2
3	1,730	3.2
4	1,718	4.0
5	1,159	6.7
6	679	9.8
7	294	9.6
8	82	6.7
9	14	15.2

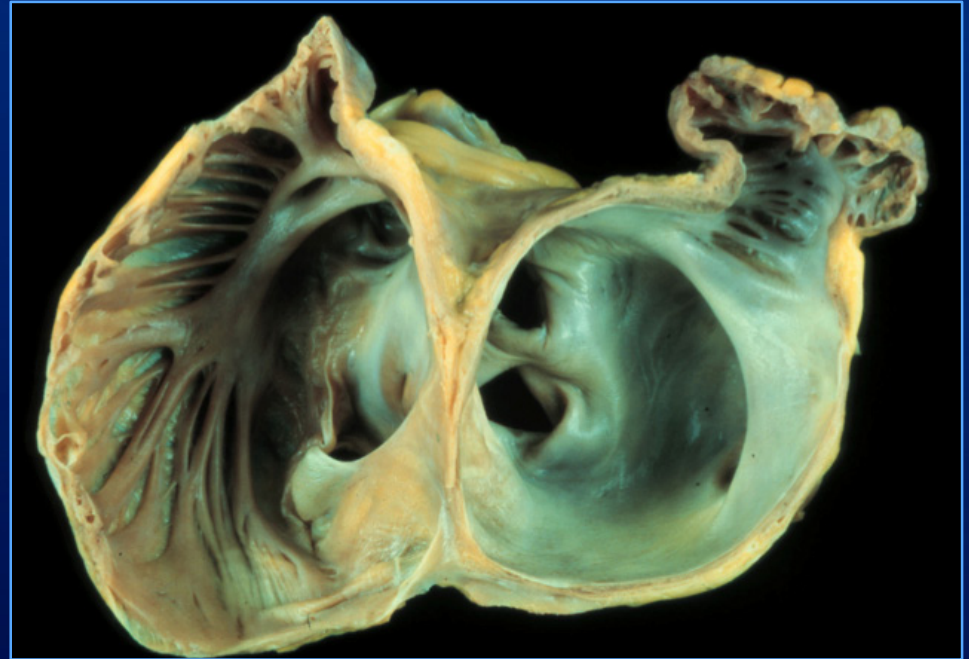
Anticoagulants – Tested in Trials With >60,000 Patients for Stroke Prevention

Bleeding rates

- Major 2-3 %
- Any 15-25%

Discontinuation rates

- 20-25% in major studies

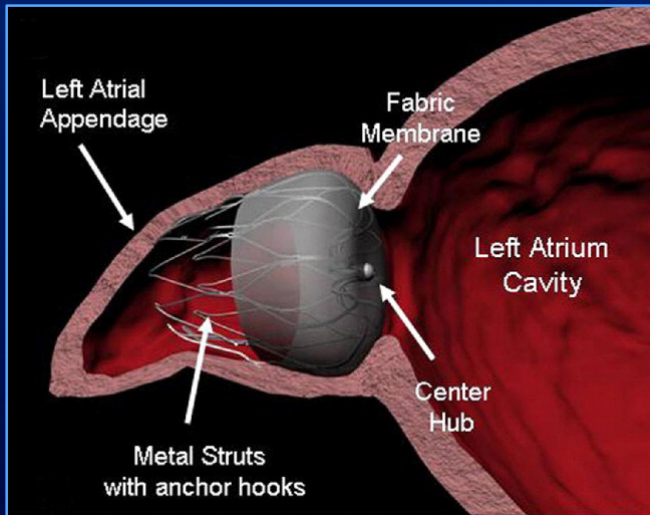


Concept: Avoid “systemic” complications by using “local” approach: & 100% adherence

Possibly control AF?

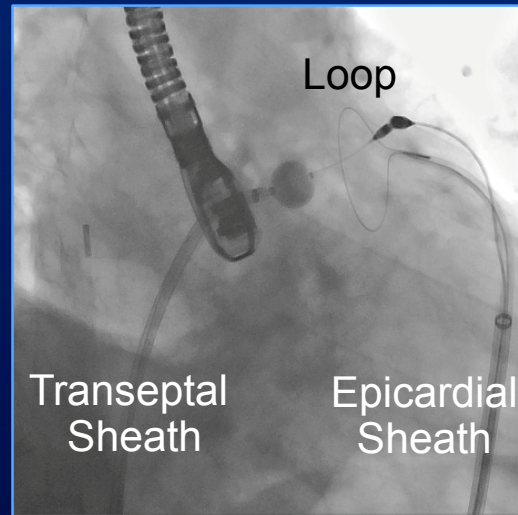
Types of Percutaneous Appendage Closure

Endocardial Plug



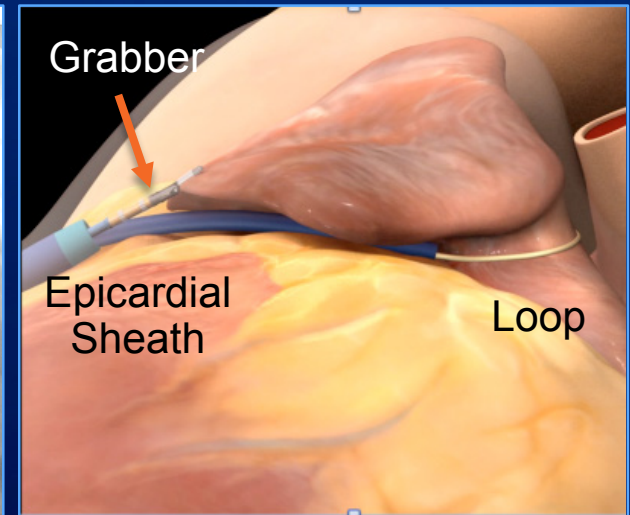
Watchman
WaveCrest
Amplatzer Cardiac Plug

Hybrid Endo/Epi Loop



Lariat

Epicardial Loop



Aegis

Professional Society Recommendations



Europace (2014) **16**, 1397–1416
doi:10.1093/europace/euu174

EHRA/EAPCI CONSENSUS STATEMENT

EHRA/EAPCI expert consensus statement on catheter-based left atrial appendage occlusion

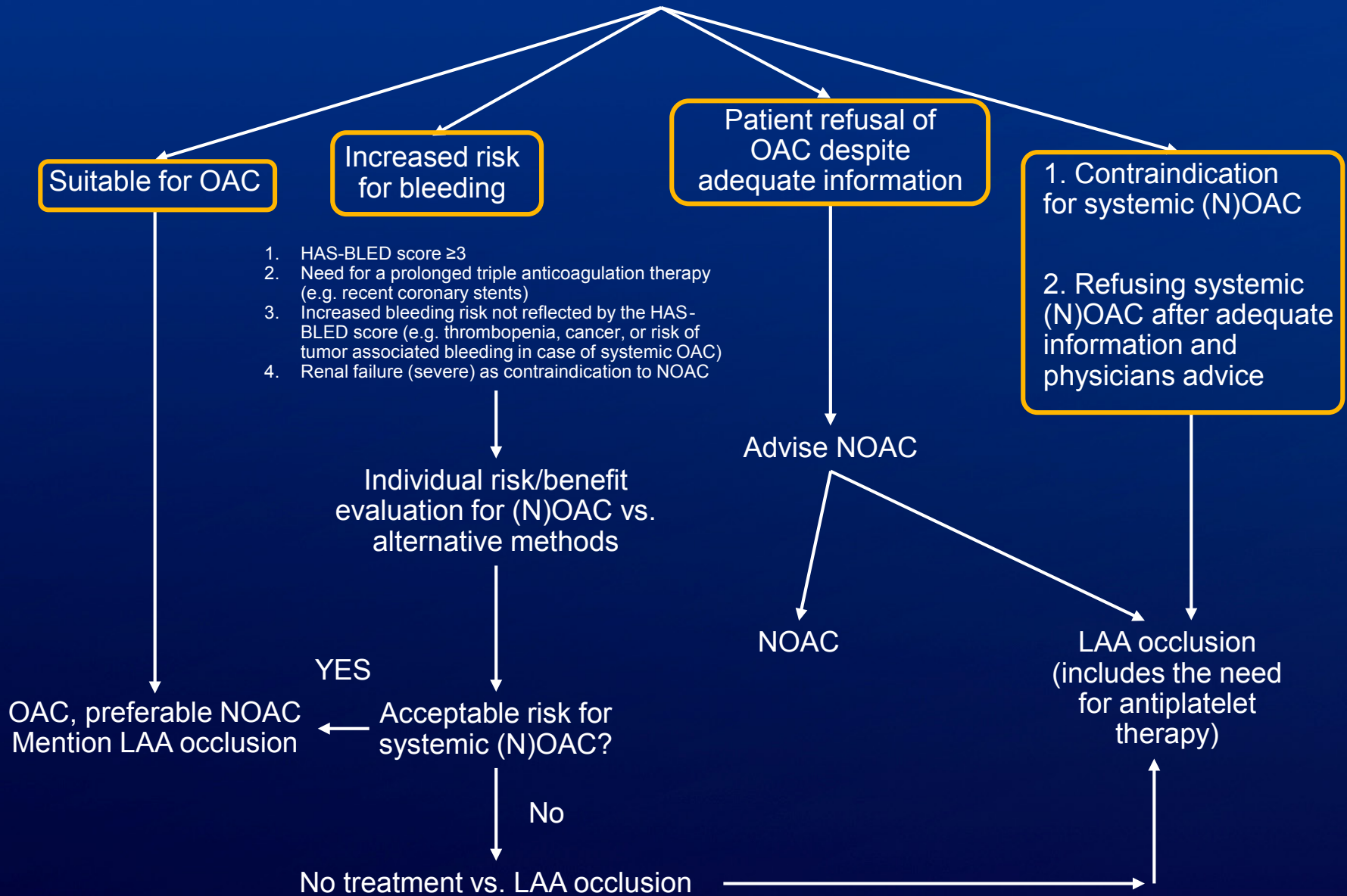
Bernhard Meier (EAPCI Chairperson) (Switzerland)¹, Yuri Blaauw (The Netherlands)², Ahmed A. Khattab (Switzerland)¹, Torsten Lewalter (Germany)³, Horst Sievert (Germany)⁴, Claudio Tondo (Italy)⁵, Michael Glikson (EHRA Chairperson) (Israel)^{6*}

Document Reviewers: Gregory Y. H. Lip (UK), Jose Lopez-Minguez (Spain), Marco Roffi (Switzerland), Carsten Israel (Germany), Dariusz Dudek (Poland), Irene Savelieva (on behalf of EP-Europace, UK)

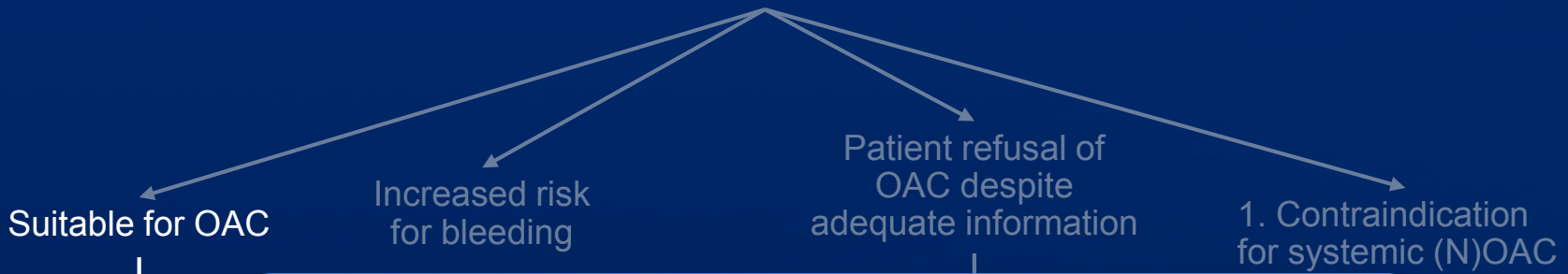
¹Cardiology, Bern University Hospital, 3010 Bern, Switzerland; ²Department of Cardiology, Maastricht University Medical Center, 6281 Maastricht, The Netherlands; ³Isar Medical Centre, 80331 Munich, Germany; ⁴Cardiovascular Center Frankfurt, 60389 Frankfurt, Germany; ⁵Cardiac Arrhythmia Research Center, Centro Cardiologico Monzino, IRCCS, 20138 Milan, Italy; and ⁶Davidai Arrhythmia Center, Sheba Medical Center, 52621 Tel Hashomer, Israel

Published online August 29, 2014

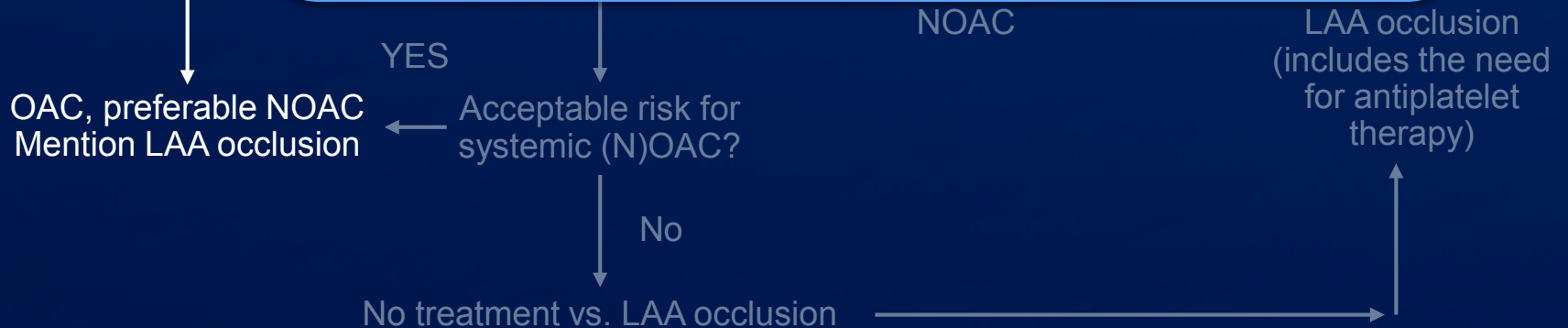
Atrial fibrillation patient with indication for PAC for stroke/embolism prevention ($CHA_2DS_2-VASc \geq 2$)



Atrial fibrillation patient with indication for PAC for stroke/embolism prevention (CHA₂DS₂-VASc >1)



“Although this population constitutes a small minority of LAA occlusion recipients today, this is the only indication that is currently based on randomized controlled data...”



Studies of Watchman LAA Closure For Stroke Prevention Patient-Level Meta-analysis

PROTECT AF and CAP: Largest Data Sets to Evaluate Totality of Data

	PROTECT AF	PREVAIL	CAP	CAP2	Total
Enrollment	2005-2008	2010-23012	2008-2010	2012-2014	
Enrolled	800	761	566	579	2,406
Randomized	707	407	–	–	1,114
Watchman: warfarin (2:1)	463:244	269:138	566	579	1,877: 382
Mean follow-up (yr)	4.0	2.2	3.7	0.58	N/A
Patient-years	2,717	860	2,022	332	5,931

Warfarin 45 days; ASA + plavix to day 180; ASA

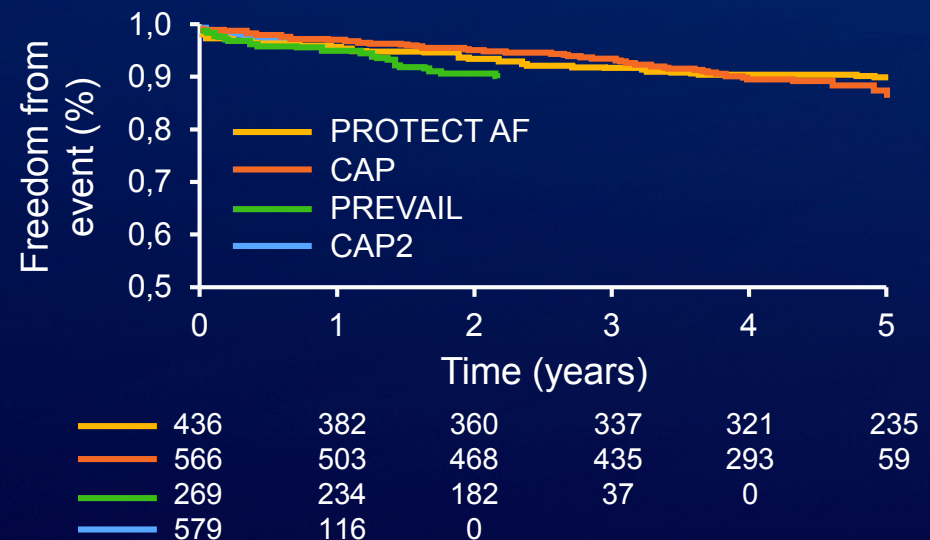
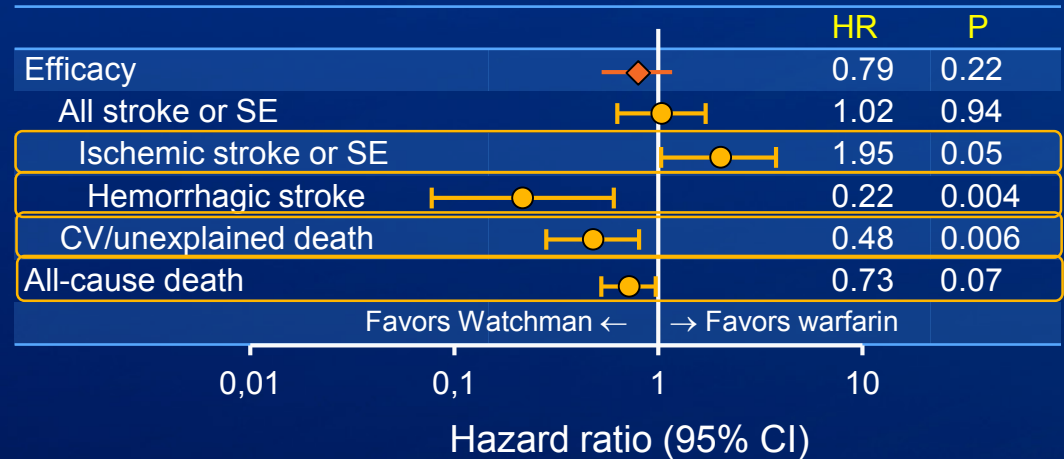
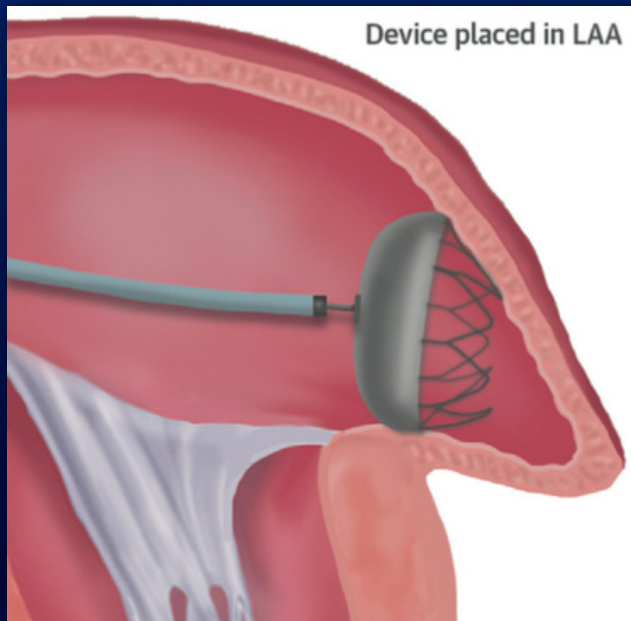
Holmes et al JACC 65(24)2614, 2015

Patient Demographics Across Trials

	PROTECT AF n=707	PREVAIL n=407	CAP n=566	CAP2 n=579
Age (yr)	72.0±8.9	74.3±7.4	74.0±8.3	75.3±8.0
Male	70.3	70.0	65.5	61.0
Ethnicity/race				
Asian	0.7	0.5	1.6	0.7
Black/African American	1.6	1.7	1.9	1.2
White/Caucasian	91.5	94.4	91.9	94.1
Hispanic/Latino	5.7	2.7	3.5	2.1
Other	0.6	0.7	1.1	1.0
CHADS ₂ score	2.2±1.2	2.6±1.0	2.4±1.2	2.7±1.1
CHADS ₂ risk factors				
CHF	26.9	19.1	23.3	27.1
Hypertension	89.8	88.8	91.4	92.5
≥75 yrs of age	43.1	51.8	53.6	59.7
Diabetes	26.2	24.9	32.4	33.9
Stroke/transient ischemic attack	18.5	30.4	27.8	29.0
CHA ₂ DS ₂ -VASc	3.5±1.6	4.0±1.2	3.9±1.5	4.5±1.3
HAS-BLED = 0 (low risk)	6.4	1.7	2.8	2.8
HAS-BLED = 1.2 (moderate risk)	73.7	68.6	61.0	69.9
HAS-BLED = 3+ (high risk)	19.9	29.7	36.2	28.3

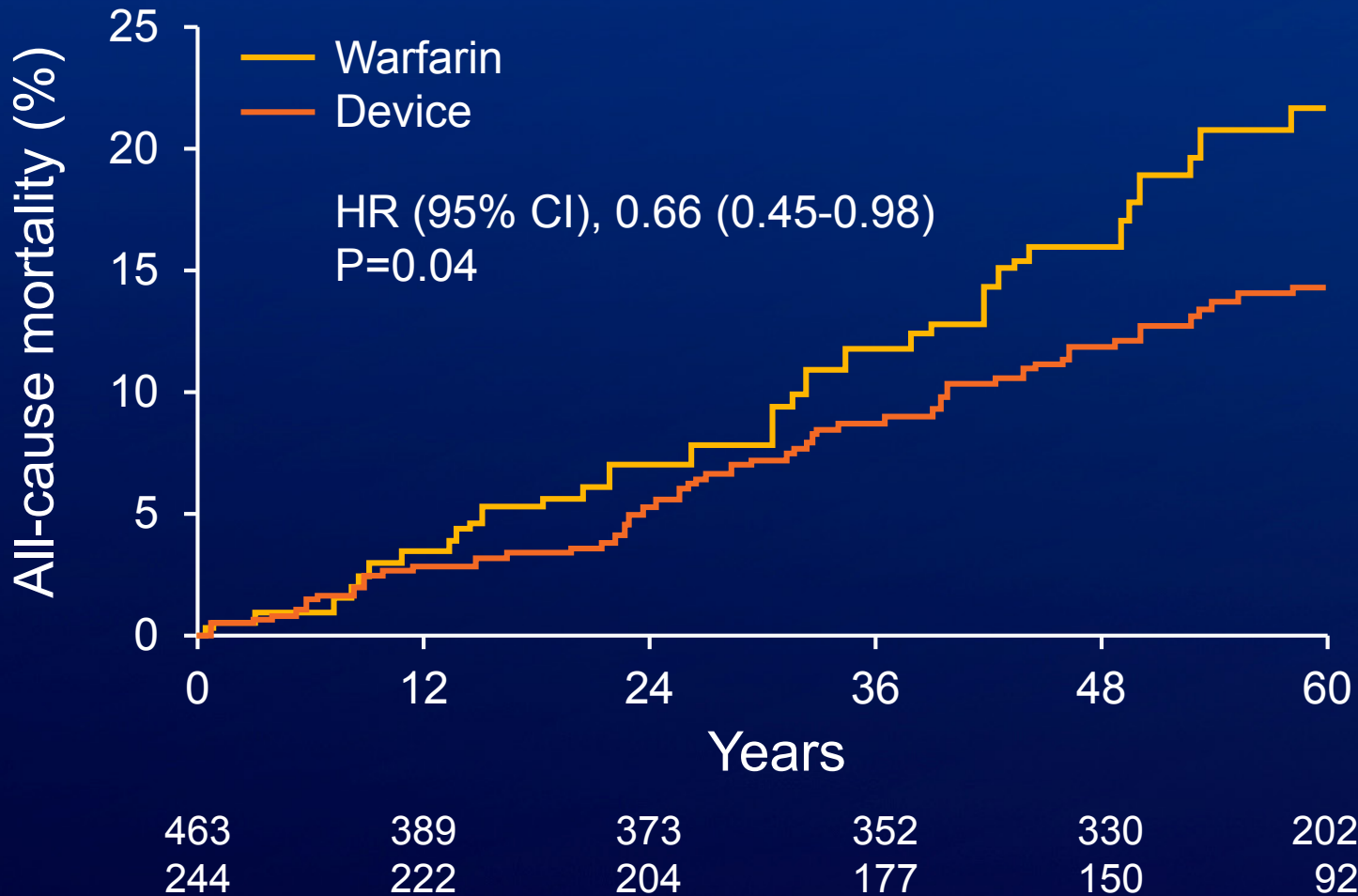
LAA Closure: Patient-Level Meta-Analysis

Stroke Prevention in Nonvalvular Atrial Fibrillation With LAA Closure



Holmes DR et al: J Am Coll Cardiol 65(24):2614, 2015

All Cause Mortality: 4 Year Follow-Up



Reddy et al: JAMA 312(19):1988, 2014

US FDA Approved Indication



- This device is indicated to reduce the risk of thromboembolism from the left atrial appendage (LAA) in patients with non-valvular atrial fibrillation who:
 - Are at **increased risk for stroke** and systemic embolism based on CHADS2 or CHA2DS2 VASc scores and are recommended for anticoagulation;
 - Are deemed by their physicians to be **suitable for warfarin**; and
 - Have an **appropriate rationale to seek a non-pharmacologic alternative to warfarin**, taking into account the safety and effectiveness of the device compared to warfarin.

http://www.accessdata.fda.gov/cdrh_docs/pdf13/p130013a.pdf (March 13, 2015)

Cumulative Device Experience

Procedural complications reduced since PROTECT AF,
and similar to registry experience

	PROTECT AF device group n/attempted (%)	CAP registry n/attempted (%)	PREVAIL device group n/attempted (%)
Implant success	408/449 (90.9)	534/566 (94.3)	252/265 (95.1)
Procedure related death	0 (0)	0 (0)	0 (0)
Procedure related ischemic stroke	5/449 (1.1)	0/566 (0.0)	1/265 (0.4)
Cardiac perforation (surgical repair)	7/449 (1.6)	1/566 (0.2)	1/265 (0.4)
Pericardial effusions with tamponade (pericardiocentesis)	13/449 (2.9)	7/566 (1.2)	4/265 (1.5)
Device embolization	3/449 (0.7)	1/566 (0.2)	2/265 (0.8)

CMS Approved Indication

- This device is indicated to reduce the risk of thromboembolism from the left atrial appendage (LAA) in patients with non-valvular atrial fibrillation who
 - A CHADS₂ score ≥ 2 or CHA₂DS²-VASc score ≥ 3
 - A formal shared decision making interaction with an independent non-interventional physician using an evidence-based decision tool on oral anticoagulation in patients with NVAf prior to LAAC.
 - A suitability for short-term warfarin but deemed unable to take long term oral anticoagulation following the conclusion of shared decision making, as LAAC is only covered as a second line therapy to oral anticoagulants

Decision memo: CAG-00445N (March 13, 2015)

CMS Approved Indication

- This device is indicated to reduce the risk of thromboembolism from the left atrial appendage (LAA) in patients with non-valvular atrial fibrillation who
 - A CHADS₂ score ≥ 2 or CHA₂DS²-VASc score ≥ 3
 - A formal shared decision making interaction with an independent non-interventional physician using an evidence-based decision tool on oral anticoagulation in patients with NVAf prior to LAAC.
 - A suitability for short-term warfarin but deemed unable to take long term oral anticoagulation following the conclusion of shared decision making, as LAAC is only covered as a second line therapy to oral anticoagulants

Decision memo: CAG-00445N (March 13, 2015)

CMS Approved Indication

- This device is indicated to reduce the risk of thromboembolism from the left atrial appendage (LAA) in patients with non-valvular atrial fibrillation who
 - A CHADS₂ score ≥ 2 or CHA₂DS²-VASc score ≥ 3
 - A formal shared decision making interaction with an independent non-interventional physician using an evidence-based decision tool on oral anticoagulation in patients with NVAf prior to LAAC.
 - A suitability for short-term warfarin but deemed unable to take long term oral anticoagulation following the conclusion of shared decision making, as LAAC is only covered as a second line therapy to oral anticoagulants

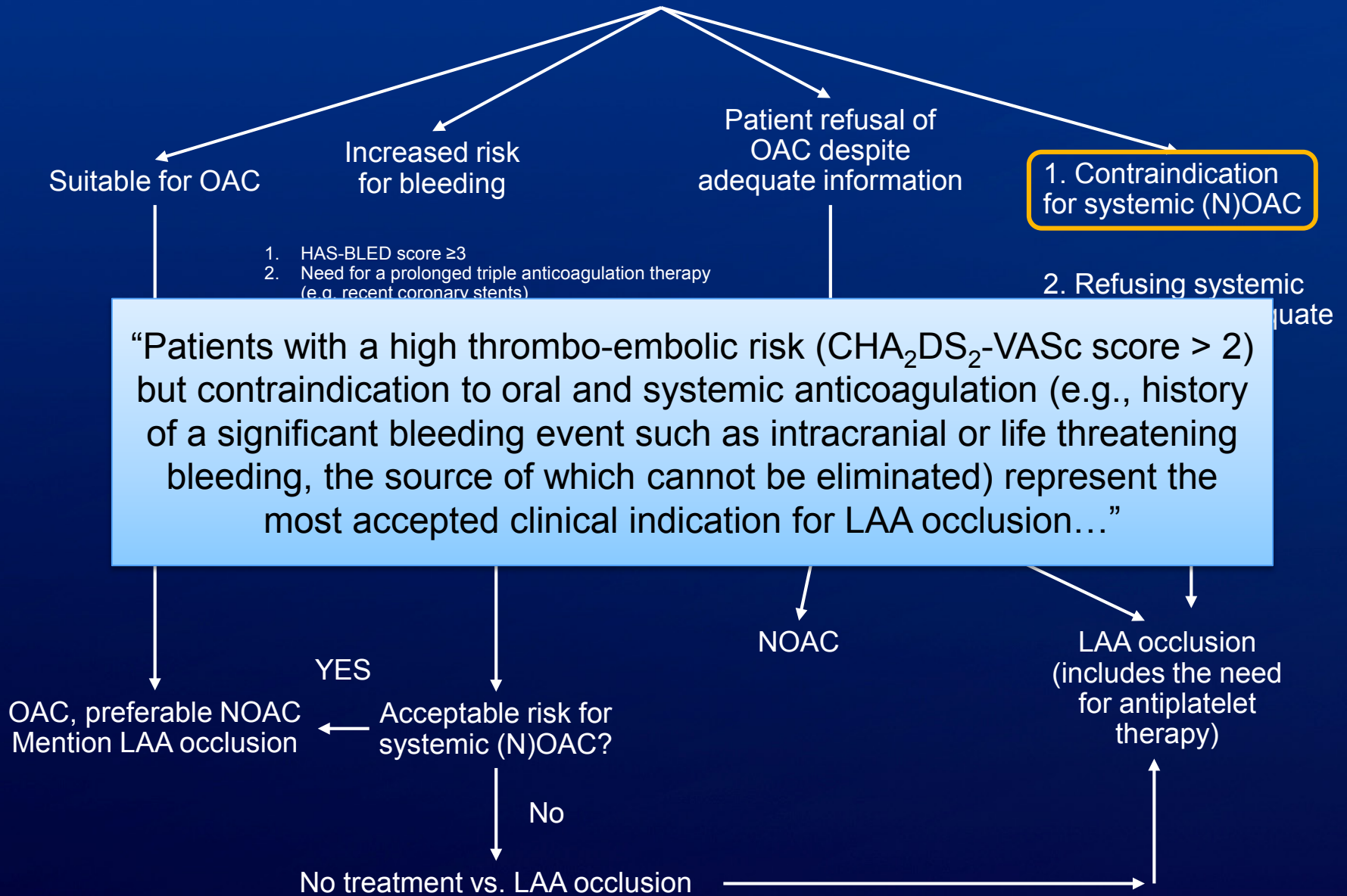
Decision memo: CAG-00445N (March 13, 2015)

CMS Approved Indication

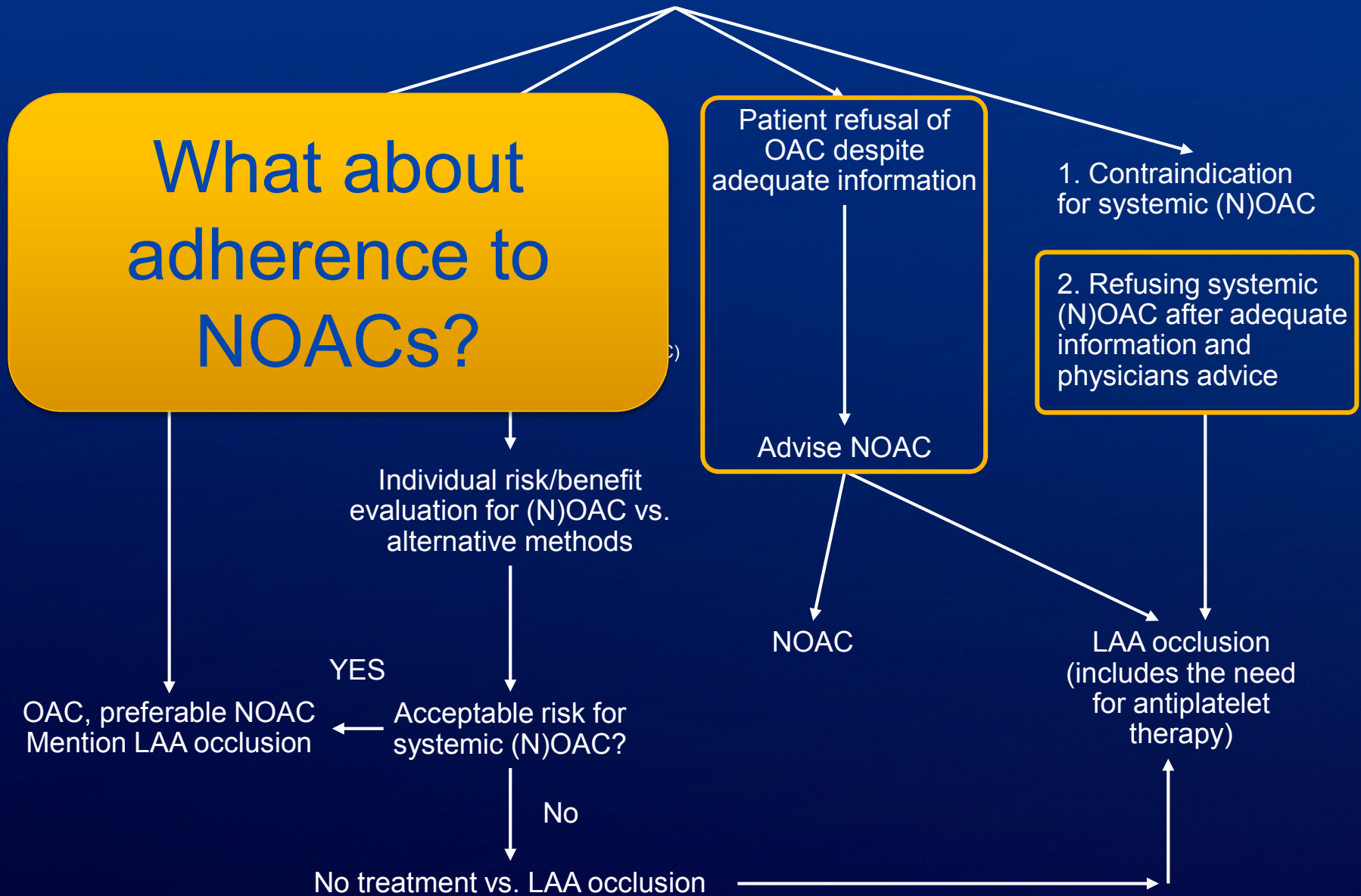
- This device is indicated to reduce the risk of thromboembolism from the left atrial appendage (LAA) in patients with non-valvular atrial fibrillation who
 - A CHADS₂ score ≥ 2 or CHA₂DS²-VASc score ≥ 3
 - A formal shared decision making interaction with an independent non-interventional physician using an evidence-based decision tool on oral anticoagulation in patients with NVAf prior to LAAC.
 - A **suitability for short-term warfarin but deemed unable to take long term oral anticoagulation** following the conclusion of shared decision making, as LAAC is only covered as a second line therapy to oral anticoagulants

Decision memo: CAG-00445N (March 13, 2015)

Atrial fibrillation patient with indication for PAC for stroke/embolism prevention ($CHA_2DS_2-VASc > 1$)

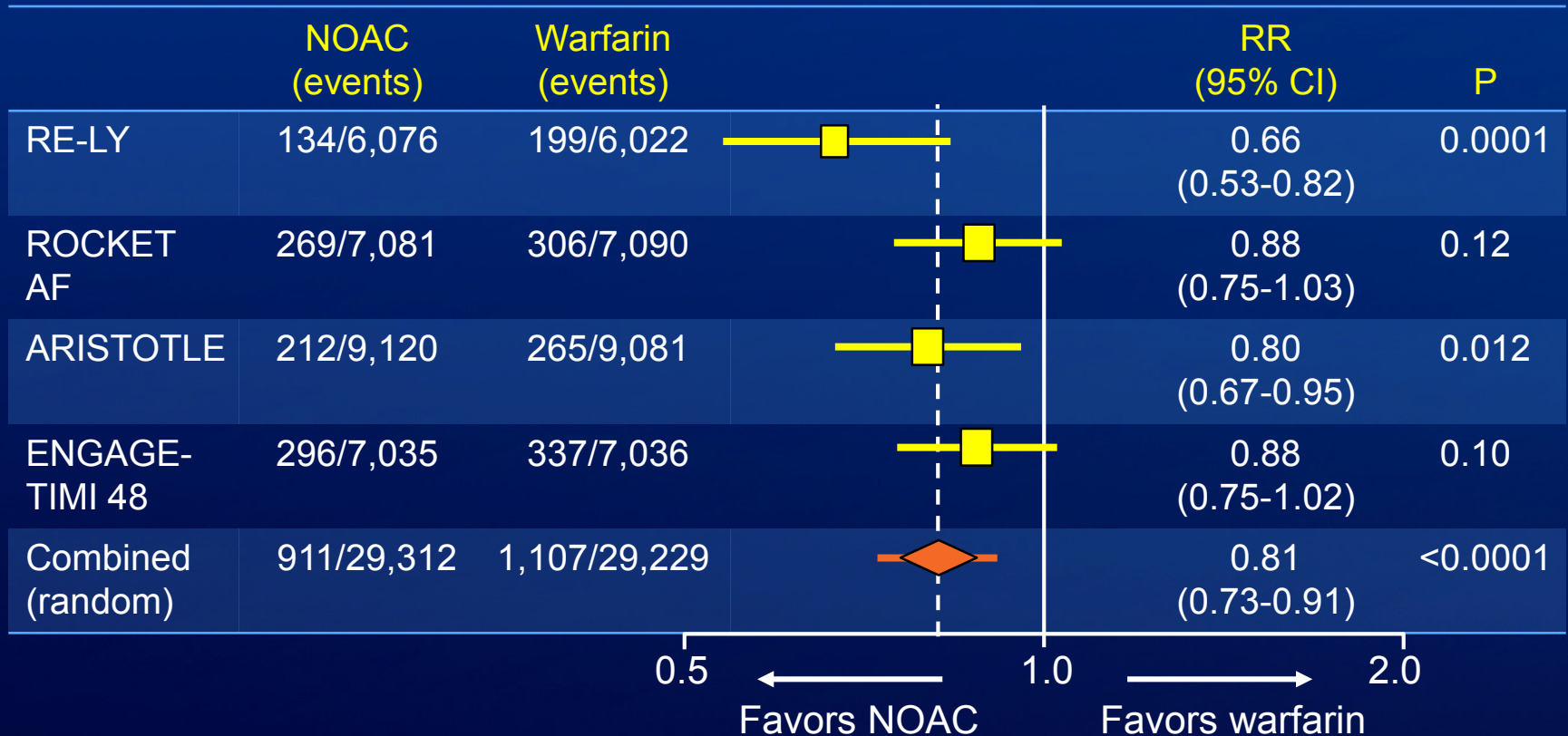


Atrial fibrillation patient with indication for PAC for stroke/embolism prevention (CHA₂DS₂-VASc >1)



NOACS vs Warfarin

Stroke or Systemic Embolism

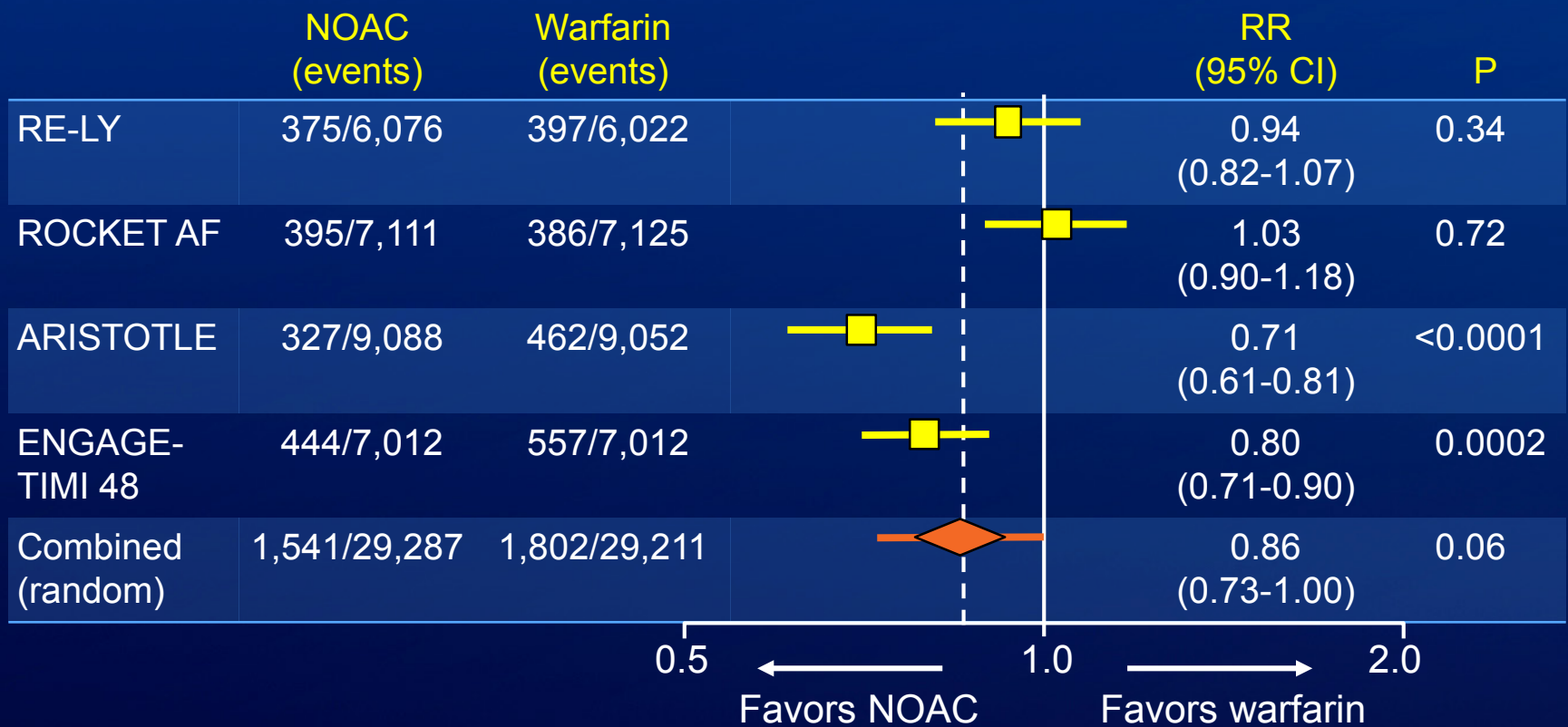


Stroke or systemic embolism was significantly reduced in the trials of apixaban (ARISTOTLE) and dabigatran (RE-LY)

Ruff et al: Lancet, Dec 2013

NOACS vs Warfarin

Risk of Major Bleeding



Risk of major bleeding was lower in trials of apixaban (ARISTOTLE) and edoxoban (ENGAGE AF)

Ruff et al: Lancet, Dec 2013

How adherent are patients to NOACs?

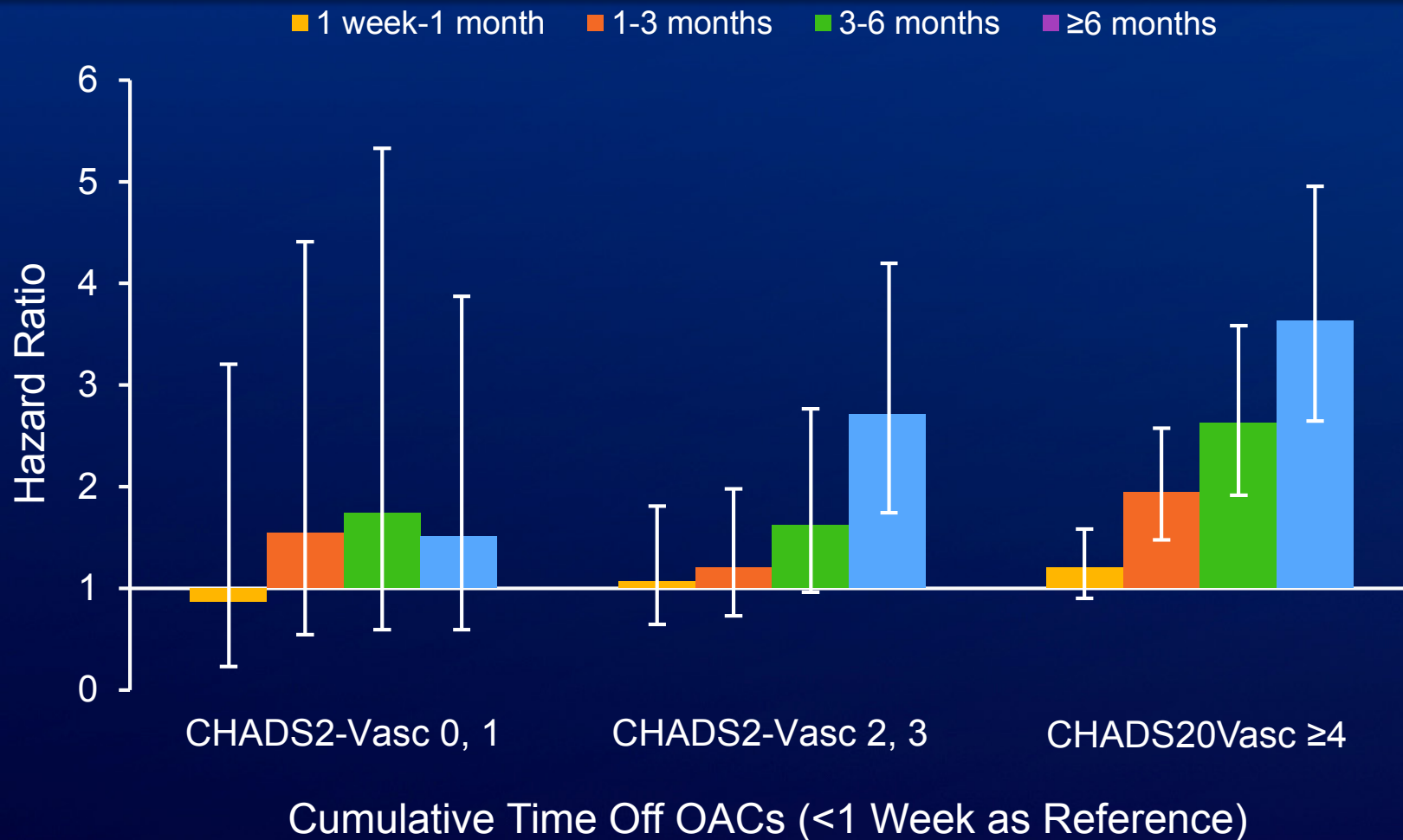
- Retrospective analysis of administrative claims data (privately insured and Medicare Advantage enrollees)
- Patients (n=64,661) with atrial fibrillation who initiated treatment with warfarin, dabigatran, rivaroxaban, or apixaban between November 1, 2010 and December 31, 2014 were identified
- **Endpoint: adherence $\geq 80\%$**

	Apixaban n=3900 (%)	Dabigatran n=10,235 (%)	Rivaroxaban n=12,336 (%)	All NOACs n=26,471 (%)	Warfarin n=38,190 (%)	P value (All NOACs Pooled vs Warfarin)
Unadjusted adherence*						
All	61.9	38.5	50.5	47.5	40.2	<0.001
CHA ₂ DS ₂ -VASc score 0 or 1	50.1	24.6	36.5	32.6	27.1	<0.001
CHA ₂ DS ₂ -VASc score 2 or 3	62.0	40.3	52.8	49.1	38.1	<0.001
CHA ₂ DS ₂ -VASc score ≥ 4	64.0	42.4	53.2	51.1	42.3	<0.001

Yao X et al: J Am Heart Assoc, 2016

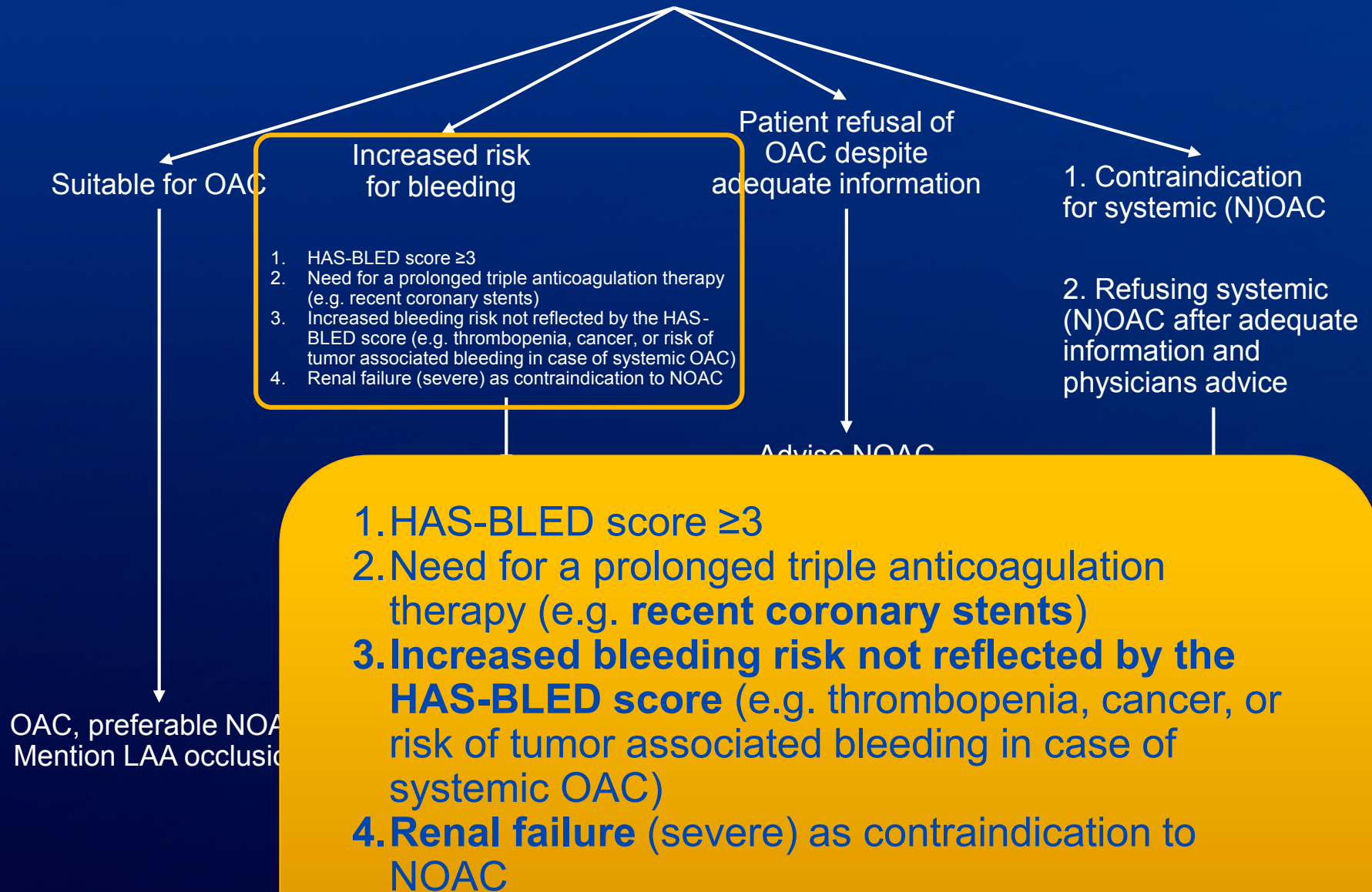
Stroke of Systemic Embolism

Adherence: Warfarin 40.2%, NOAC 47.5% at 1.1 years



Yao X et al: J Am Heart Assoc, 2016

Atrial fibrillation patient with indication for PAC for stroke/embolism prevention (CHA₂DS₂-VASc >1)



1. HAS-BLED score ≥ 3
2. Need for a prolonged triple anticoagulation therapy (e.g. **recent coronary stents**)
3. **Increased bleeding risk not reflected by the HAS-BLED score** (e.g. thrombopenia, cancer, or risk of tumor associated bleeding in case of systemic OAC)
4. **Renal failure (severe)** as contraindication to NOAC

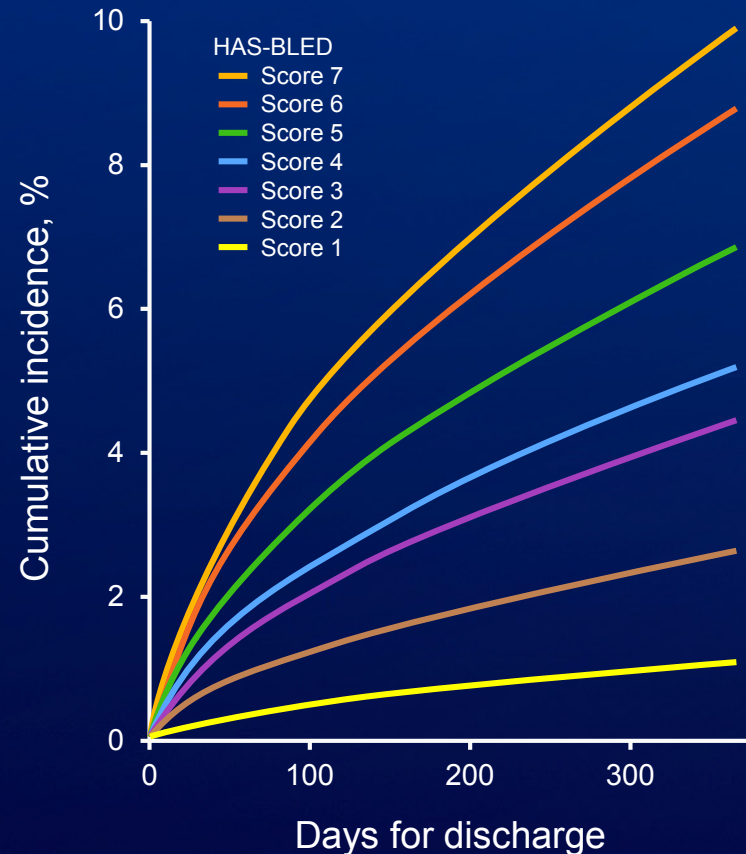
HAS-BLED Score

- **H**: hypertension
- **A**: abnormal renal/liver function
- **S**: stroke
- **B**: bleeding history
- **L**: labile INR
- **E**: elderly
- **D**: drug consumption/alcohol abuse

1-year bleeding rate on VKA

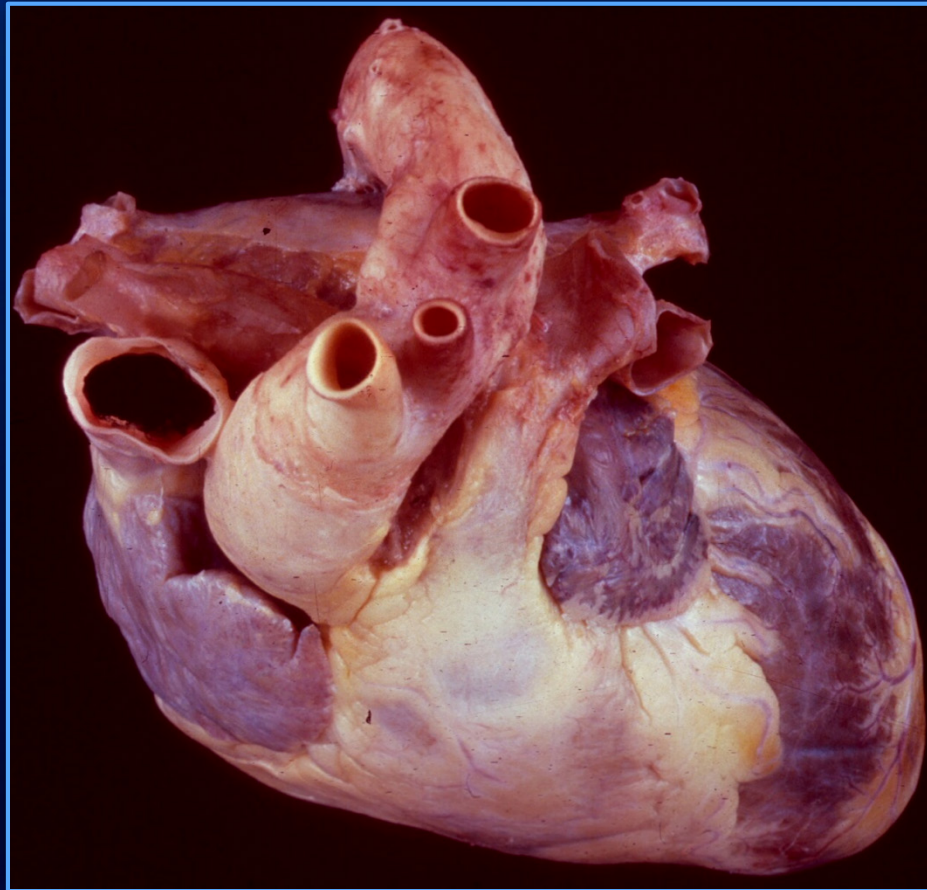
- 0-1: 2.66% (95% CI: 2.40-2.94)
- 2: 5.54% (95% CI: 5.15-5.96)
- ≥ 3 : 8.11% (95% CI: 7.61-8.64)

Danish cohort of 118,584 patients with non-valvular AF



Olesen JB et al: J Thromb Haemost 9: 1460, 2011

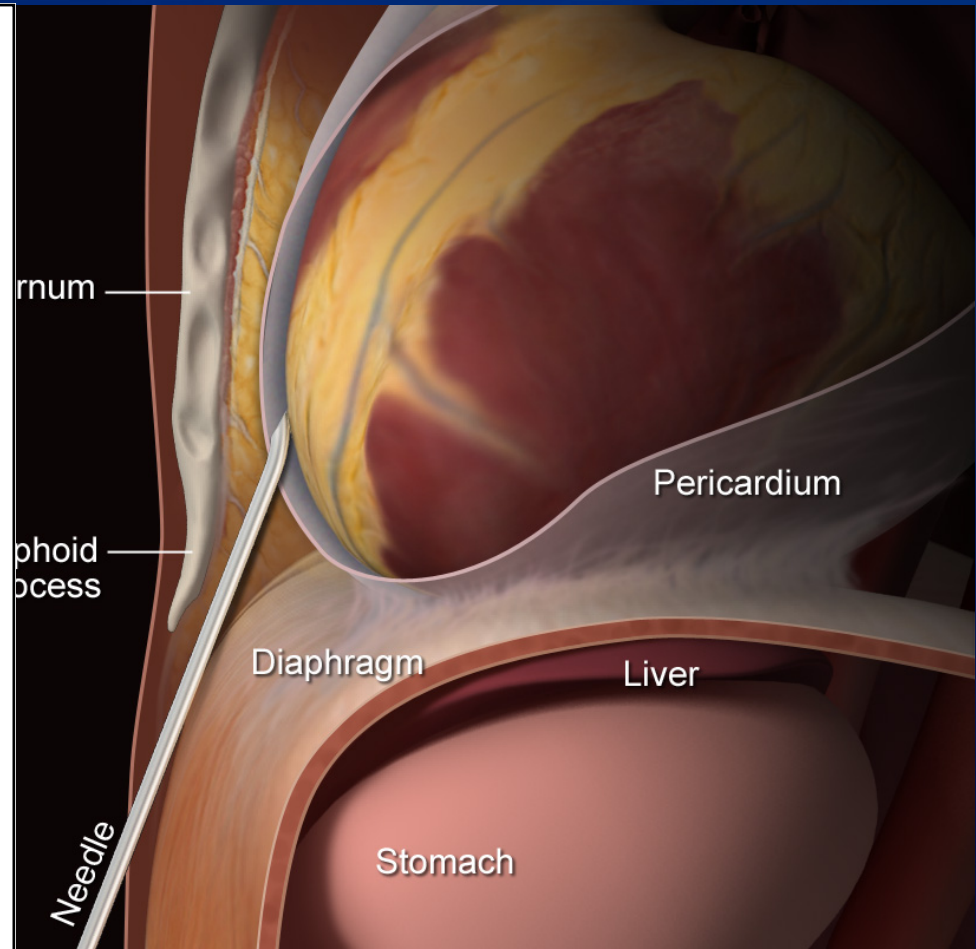
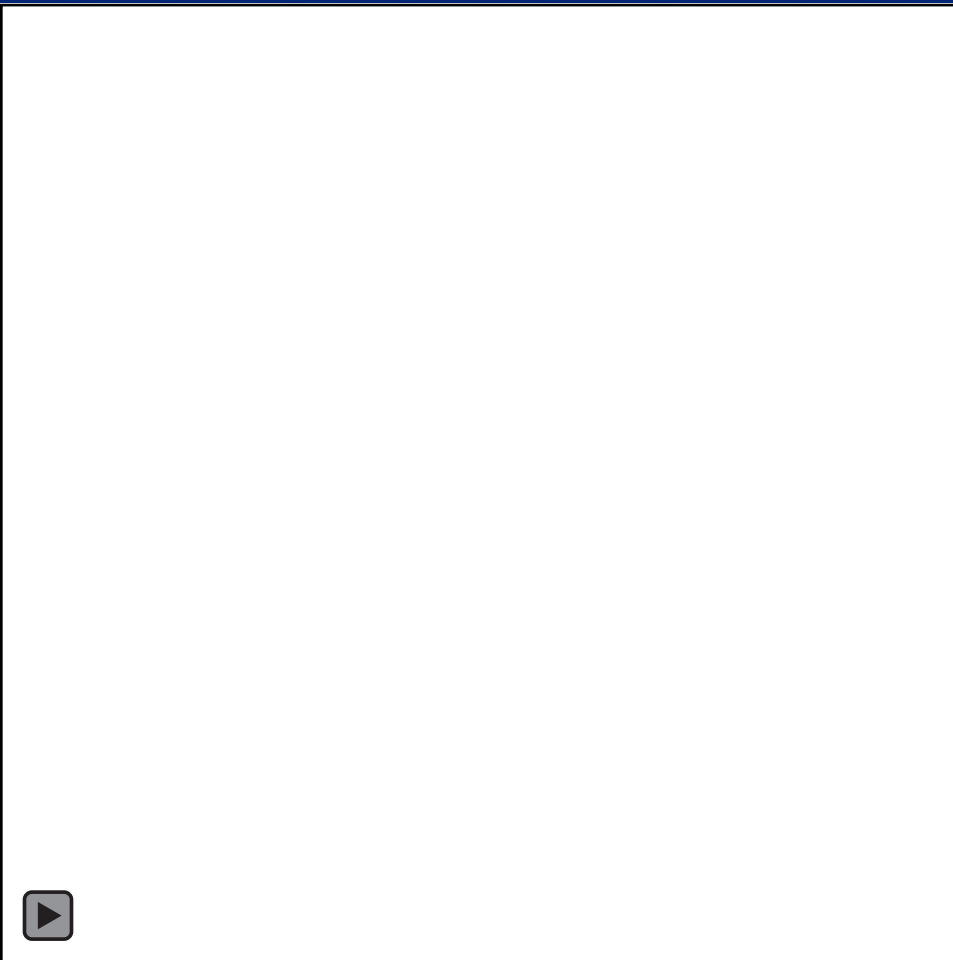
Normal Heart External Topography



Superior View

Lateral View – Percutaneous epicardial access

head

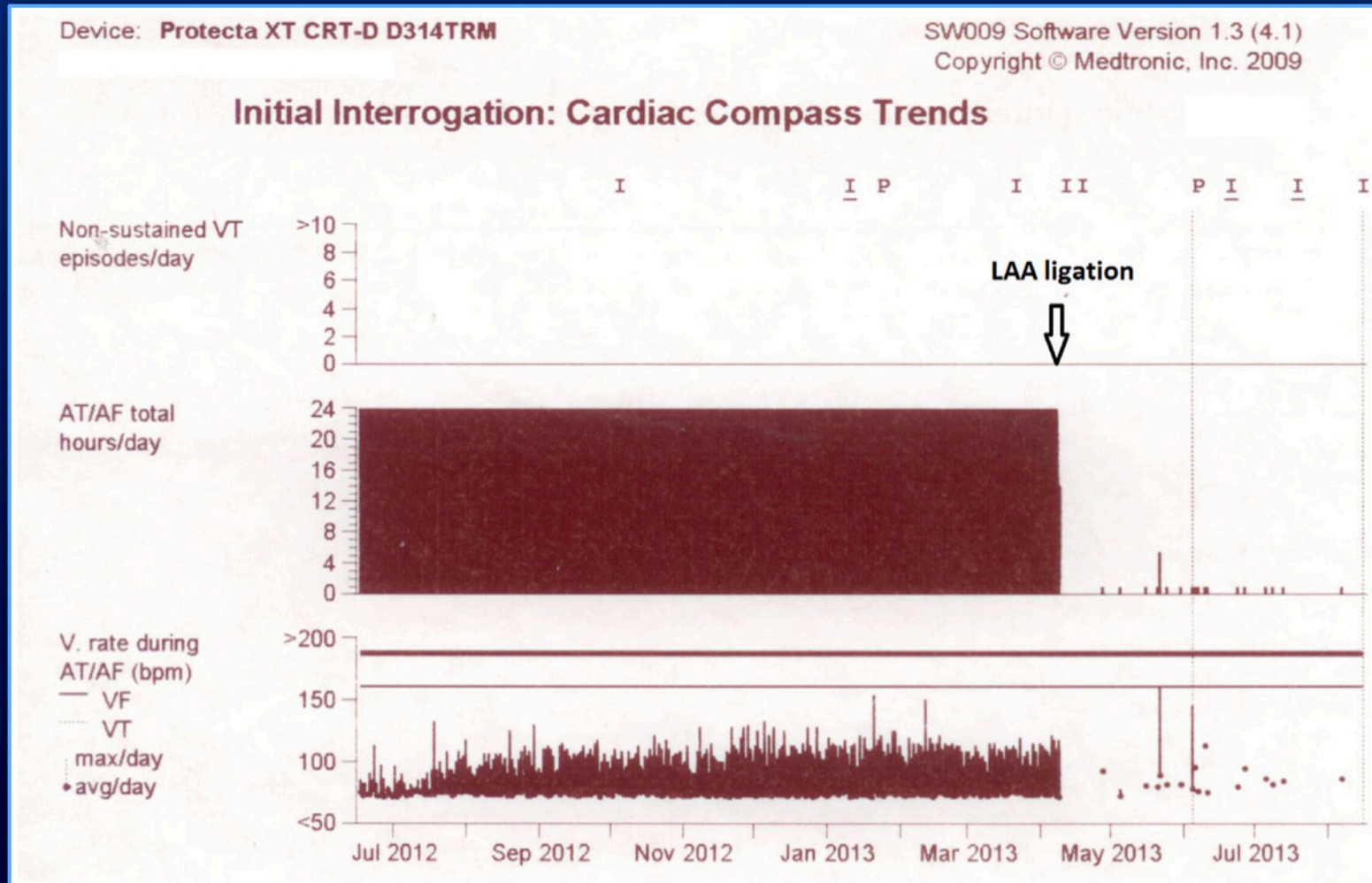


feet



Hybrid: No foreign body
Ostial shape less important
Post op A/C may not be needed
May control Atrial Fibrillation

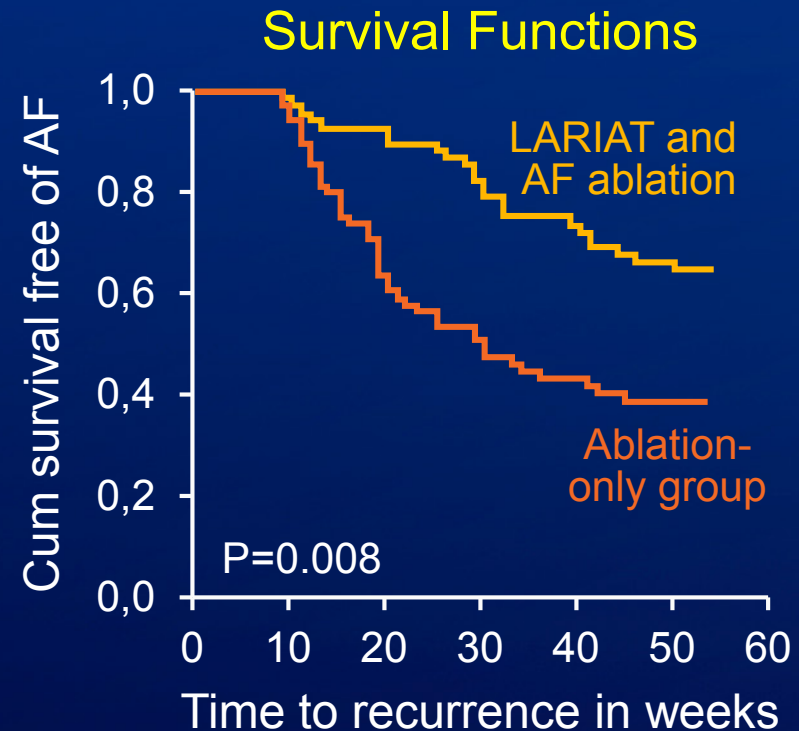
Potential New Indication: AF Control



Afzal et al: Heart Rhythm 2015;12:52-59

LAALA-AF Registry: Ablation and Ligation

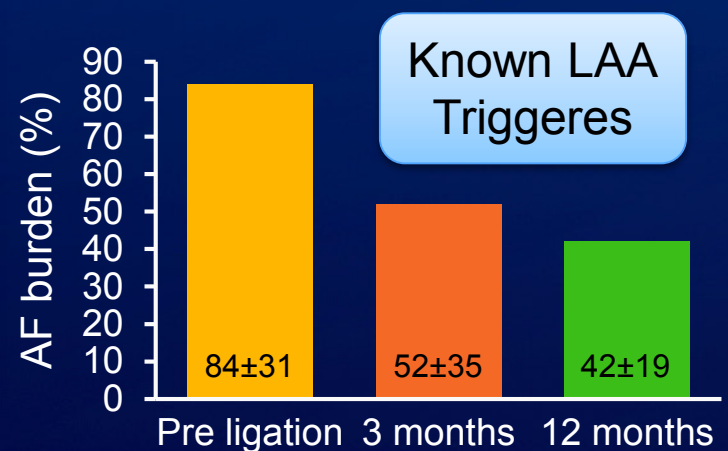
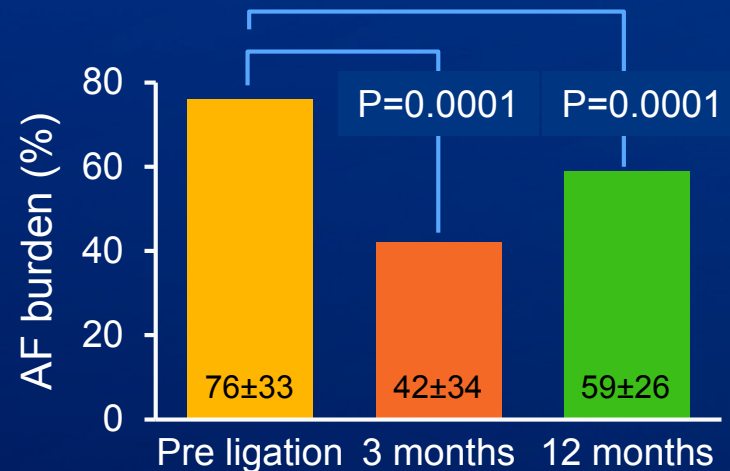
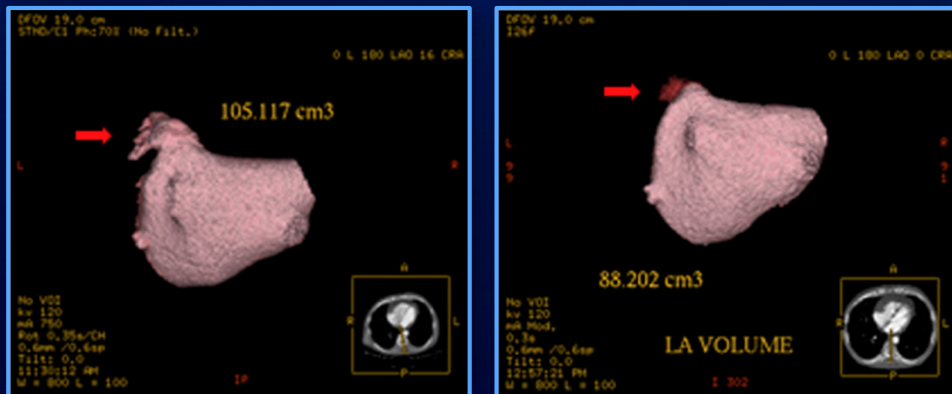
- Prospective observation study
- Persistent AF
- LAA ligation (LARIAT) before AF ablation (n=69)
- Controls: only ablated (n=69)



“In patients with persistent AF, addition of LAA ligation with the LARIAT device to conventional ablation appears to improve the success rate of AF ablation” → AMAZE trial prospectively studying

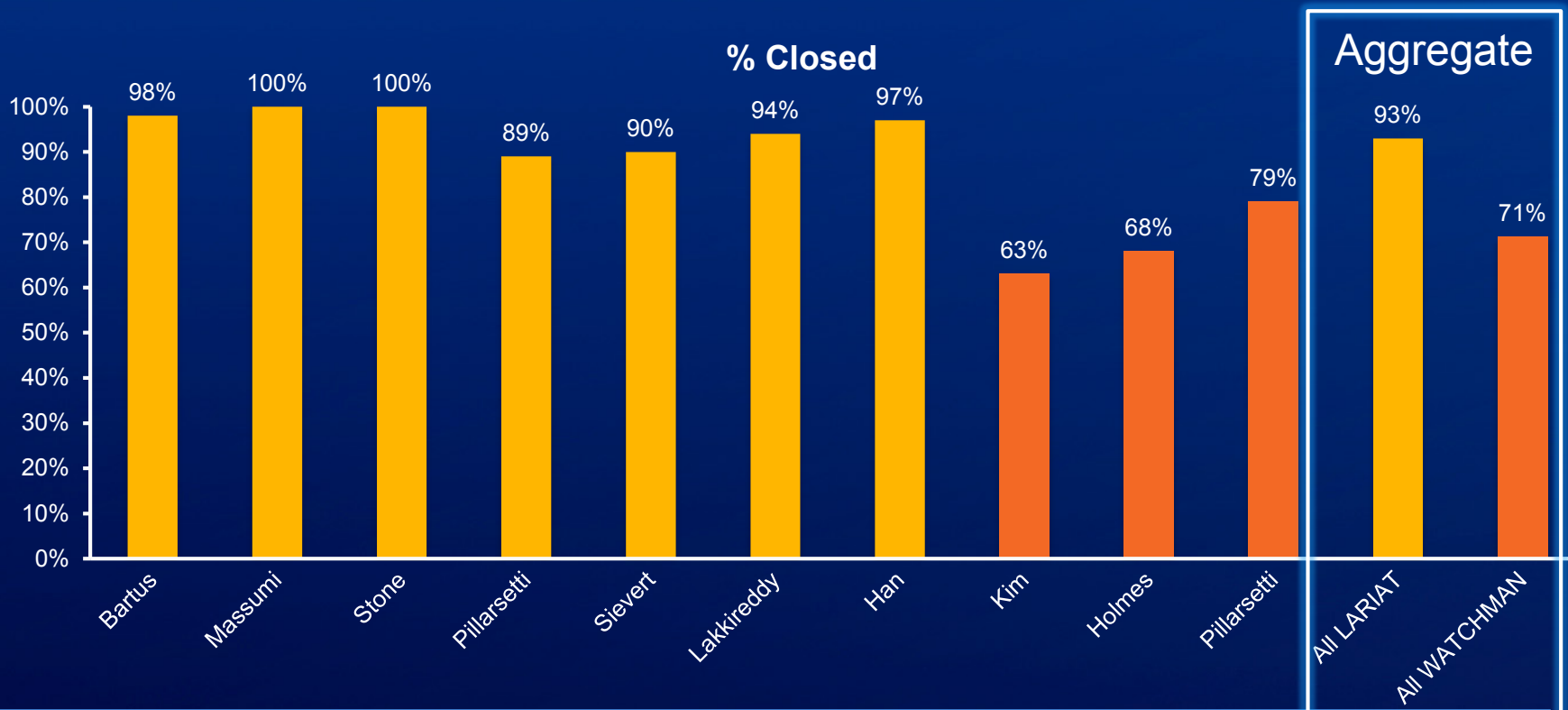
AF Burden Reduction with LAA Ligation

- 50 patients with AF and CIED
- Burden assess baseline, 3 months, 12 months



LARIAT vs Watchman Closure Rates

■ LARIAT (n=1146)[^] ■ Watchman (n=684)*

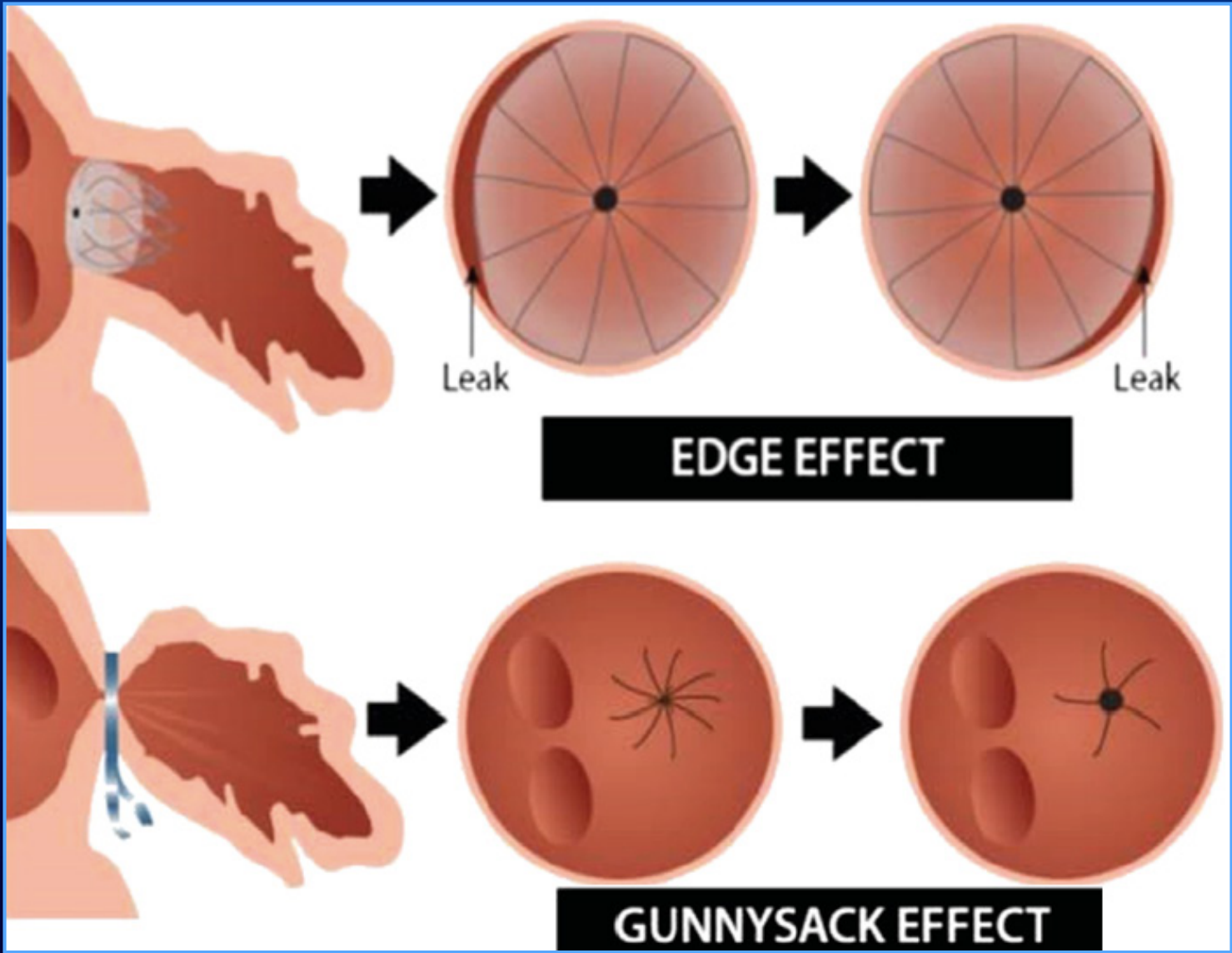


Author	Bartus ⁷	Massumi ⁵	Stone ⁶	Pillarsetti ¹¹	Sievert ⁹	Lakkireddy ¹²	Han ¹³	Kim ²⁰	Holmes ¹⁵	Pillarsetti ¹¹	LARIAT	WATCHMAN
% Closed	98%	100%	100%	89%	90%	94%	97%	63%	68%	79%	93%	71%
F/U Period	12m	96d	45d	12m	12m	12m	12m	3m	12m	12m	9m	9m
N=	65	17	22	259	117	480	68	46	419	219	1028	684

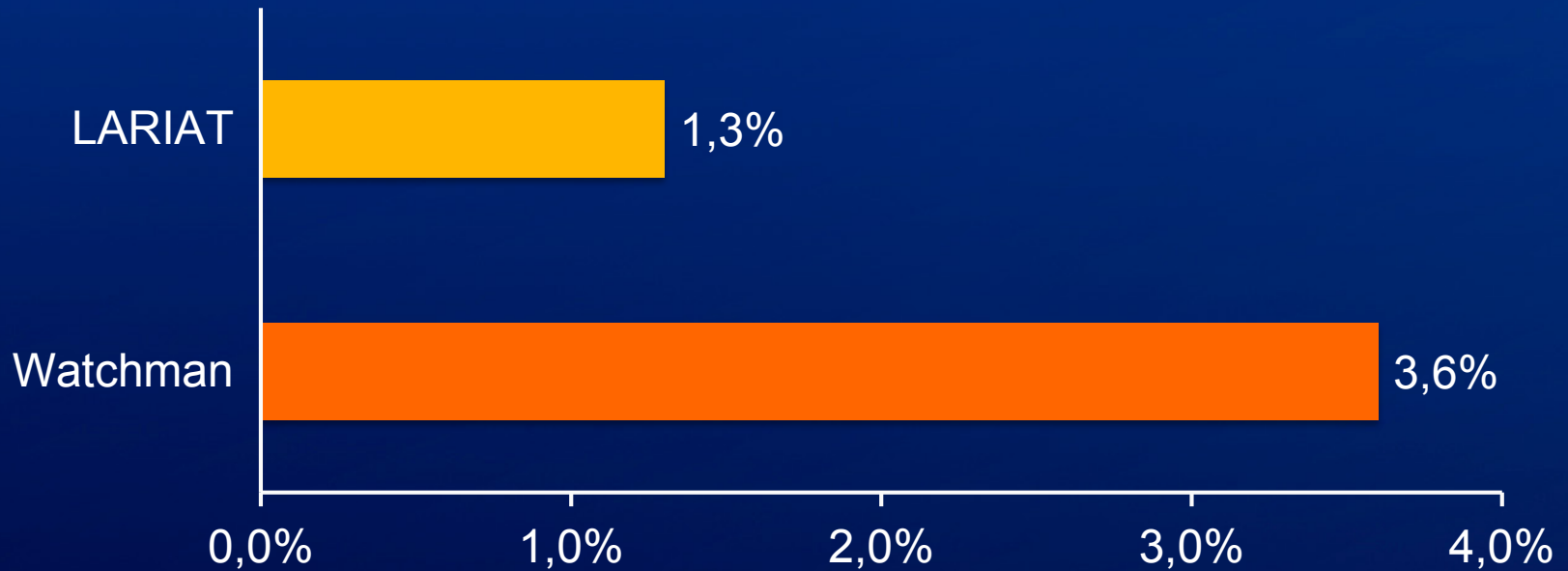
- LARIAT left atrial appendage closure is associated with a lower rate of leaks at long-term follow up as compared to Watchman.
- LARIAT is the only LAA closure device where a leak may be corrected.

[^]LARIAT leak rate data only includes papers that followed >90% of subjects at 1yr

*Watchman leak rate data only includes papers that measured actual leak rates versus Watchman closure success criteria of <5mm leaks



LARIAT vs Watchman Thrombus Rates



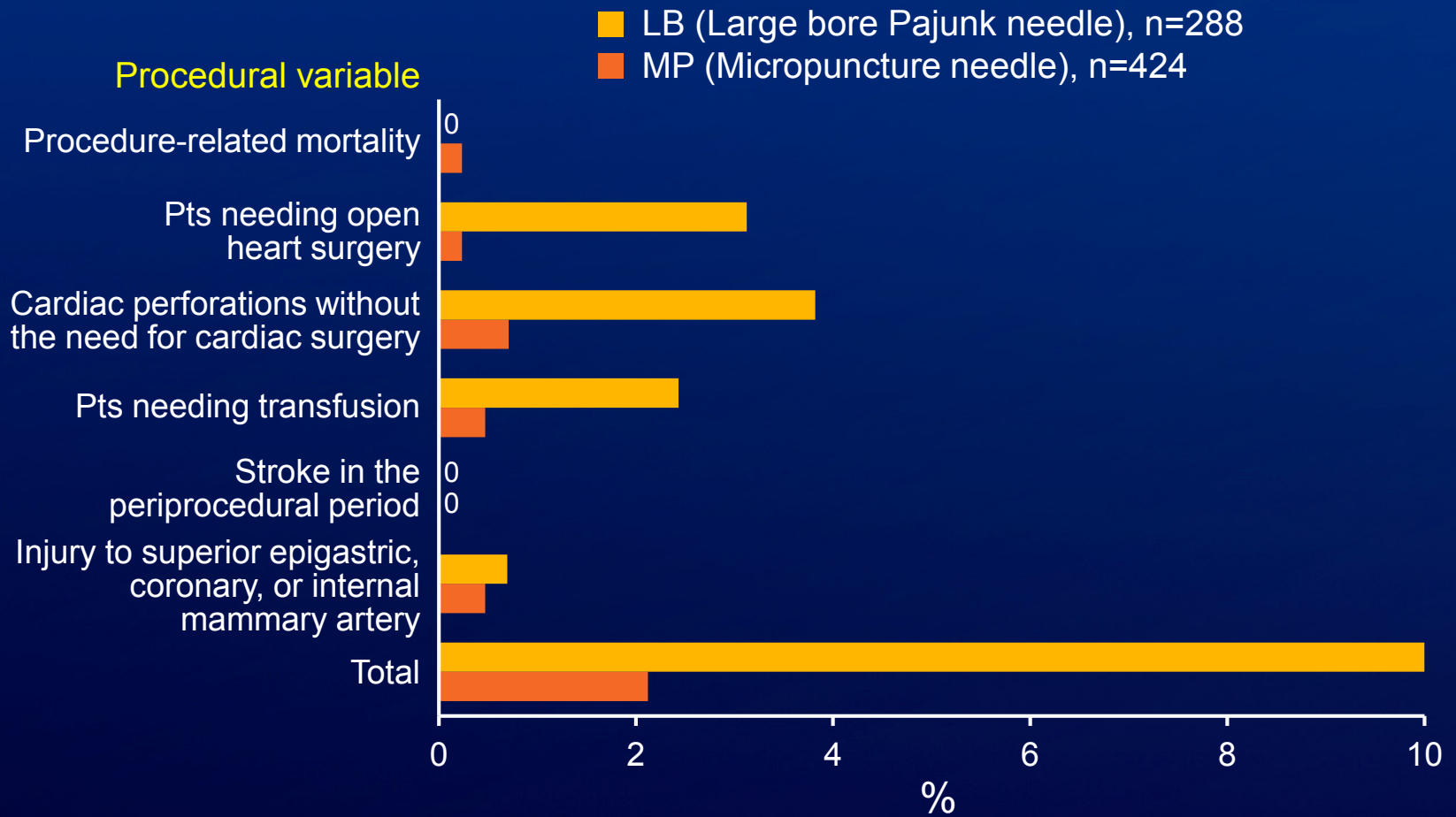
LARIAT n=259
OAC: 0-45d (31%)
APT: 6mo (30%)
>6mo: Operator discretion

Watchman n=219
Warfarin: 45d (100%)
APT: 6mo (100%)
>6mo: Operator discretion

Source: Pillarisetti J., et al., Endocardial (Watchman) versus Epicardial (LARIAT) Left Atrial Appendage Exclusion Devices: Understanding the Differences in the Locations and Type Leaks and their Clinical Implications. Heart Rhythm. 2015 Jul;12(7):1501-7.

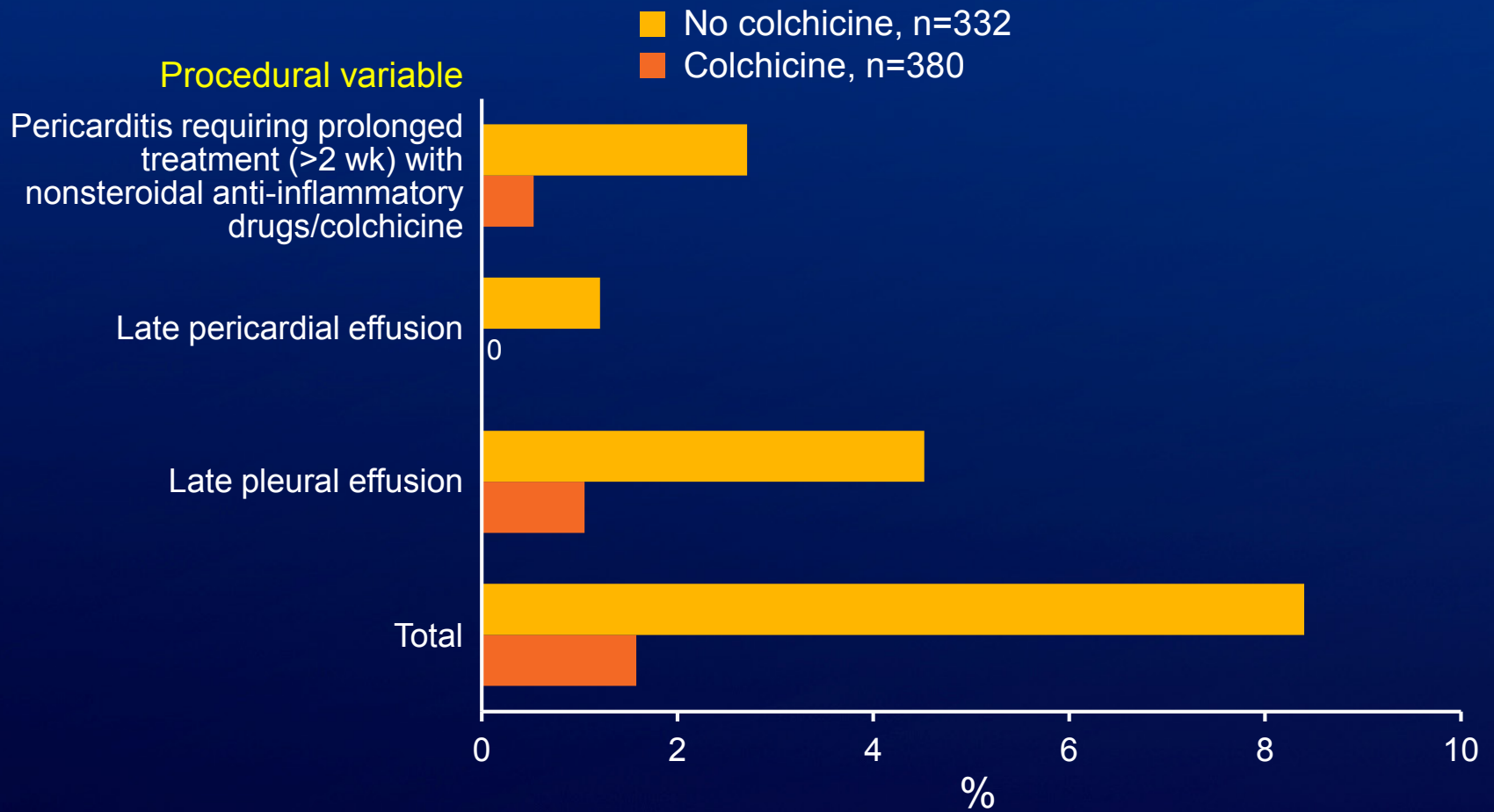
LARIAT: Acute Procedural Complications

Importance of Micropuncture Needle



Lakkireddy et al: Heart Rhythm 13:3010, 2016

LARIAT: Impact of Use of Periprocedural Colchicine on Delayed Complications



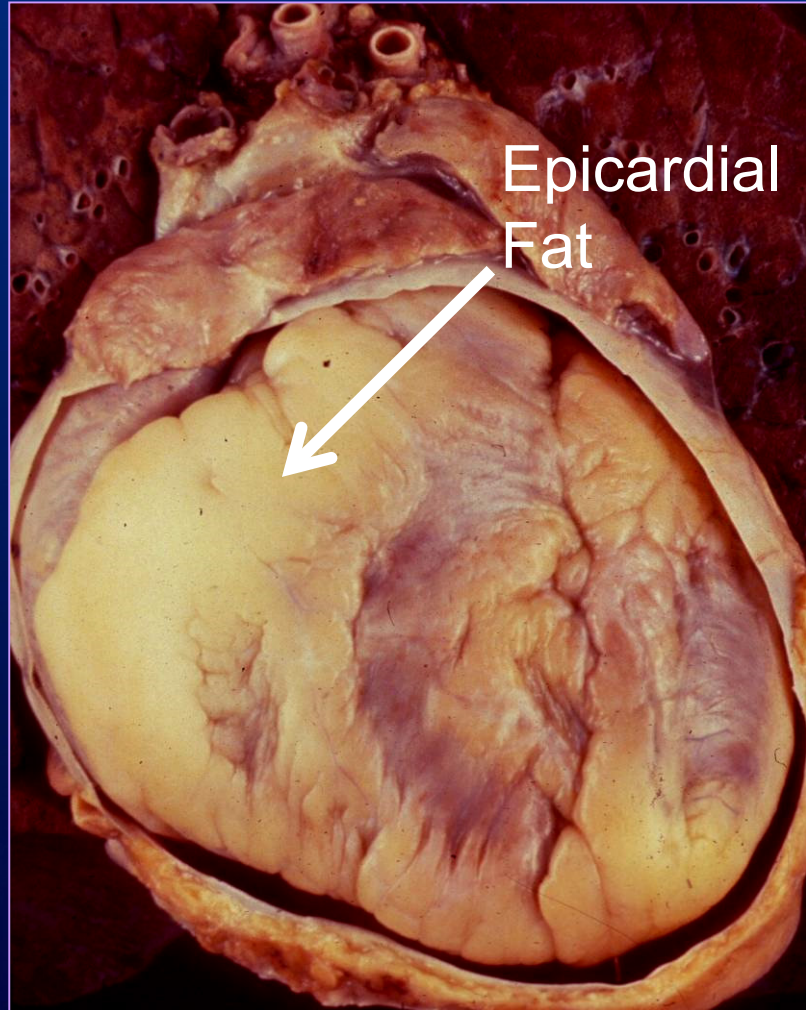
E

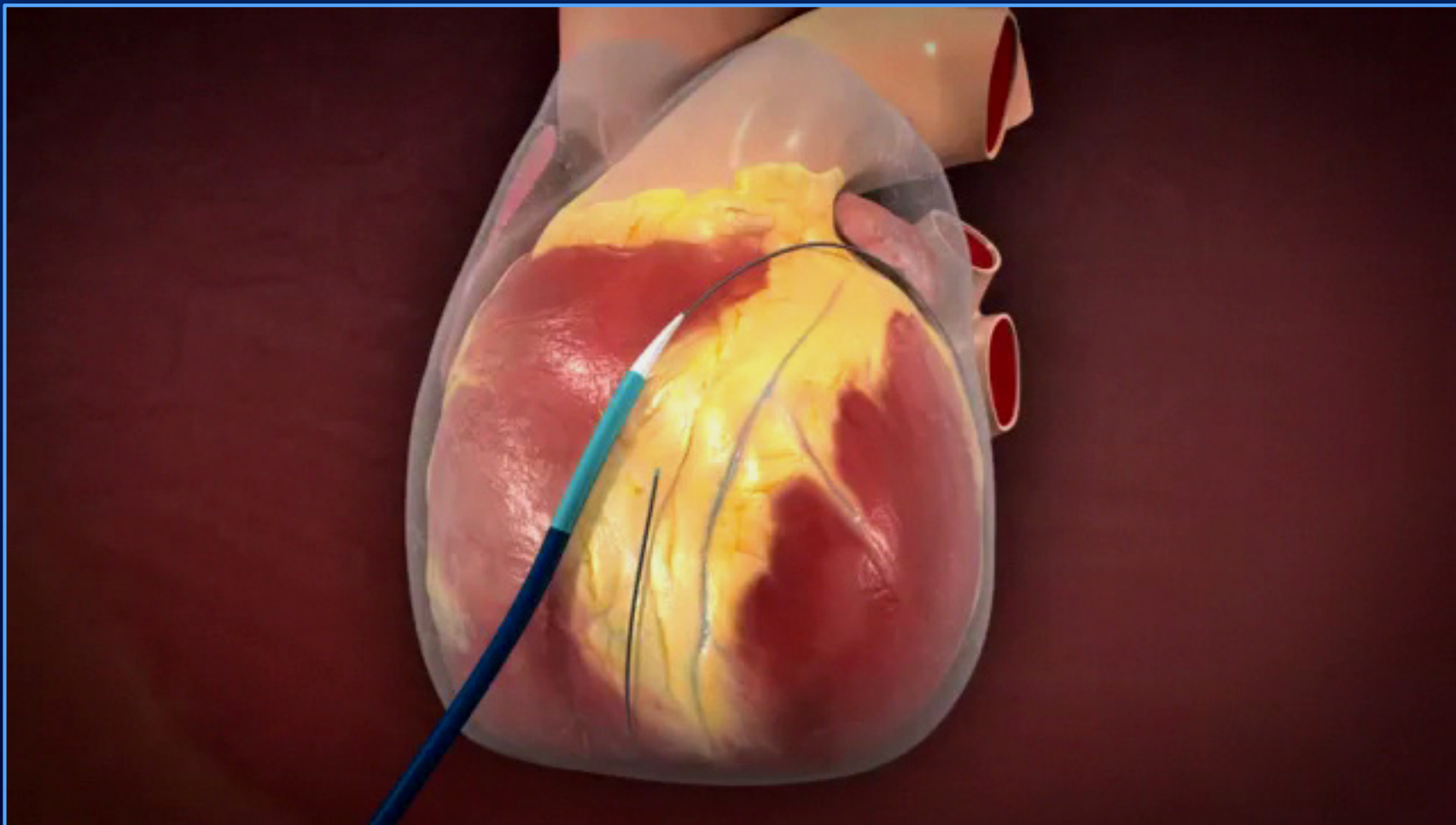
Lakkireddy et al: Heart Rhythm 13:3010, 2016

Heparin and bleeding in LAA closure

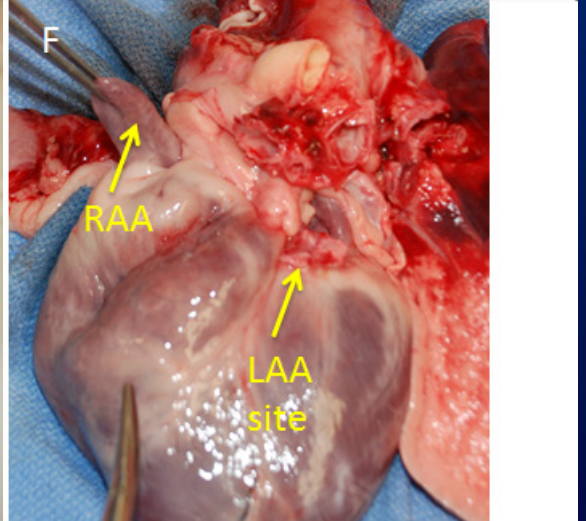
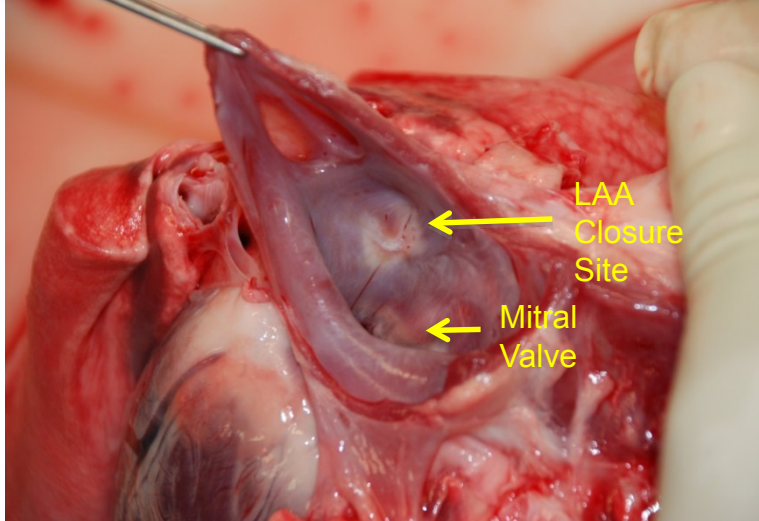
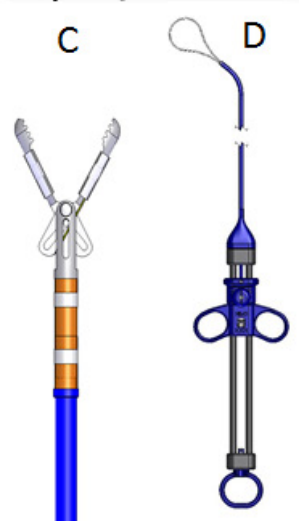
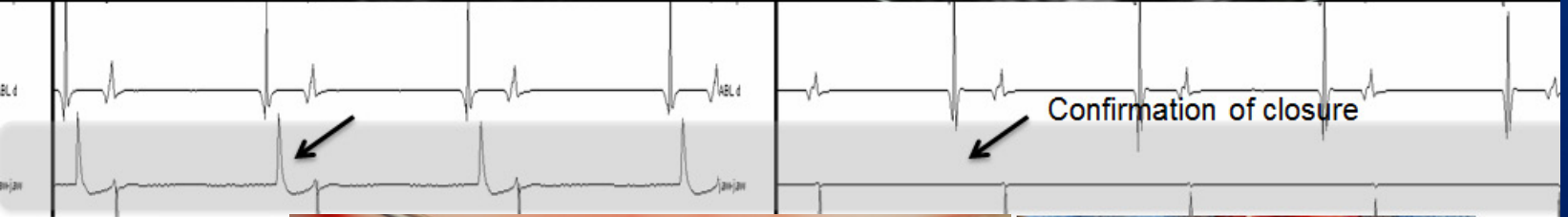
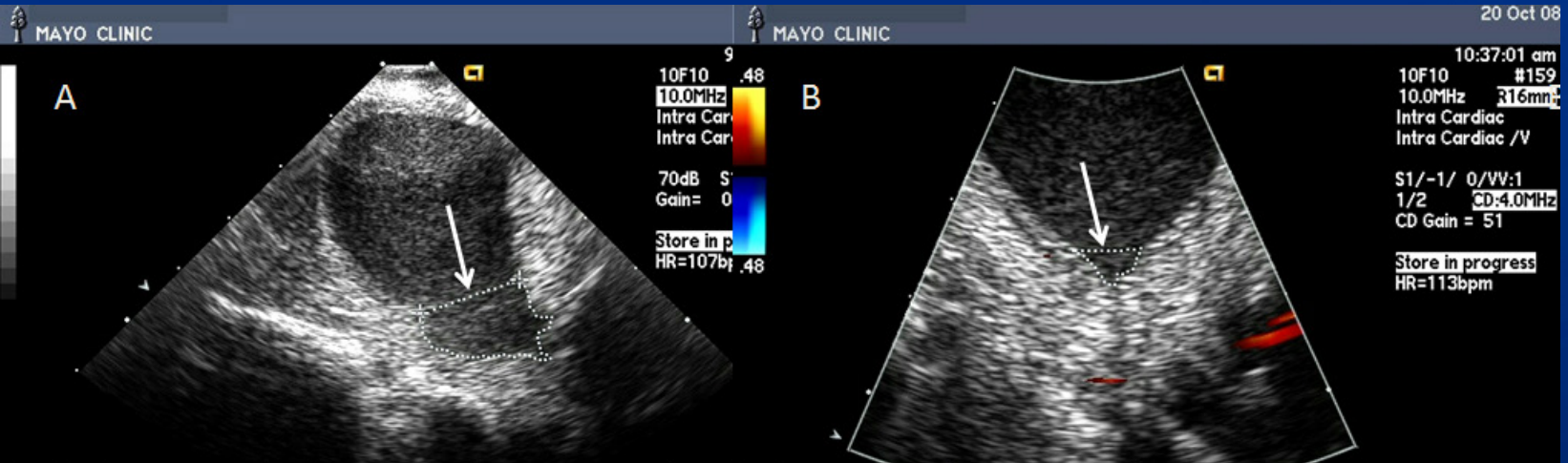
Heparin may augment:

- Bleeding due to sheath contact with epicardial fat
- Small tears of LAA or other structures (4.8% effusion in Protect AF)
- Disruption of “bridging veins” in pericardial space
- Post op pain *due to blood in pericardium & inflammation*



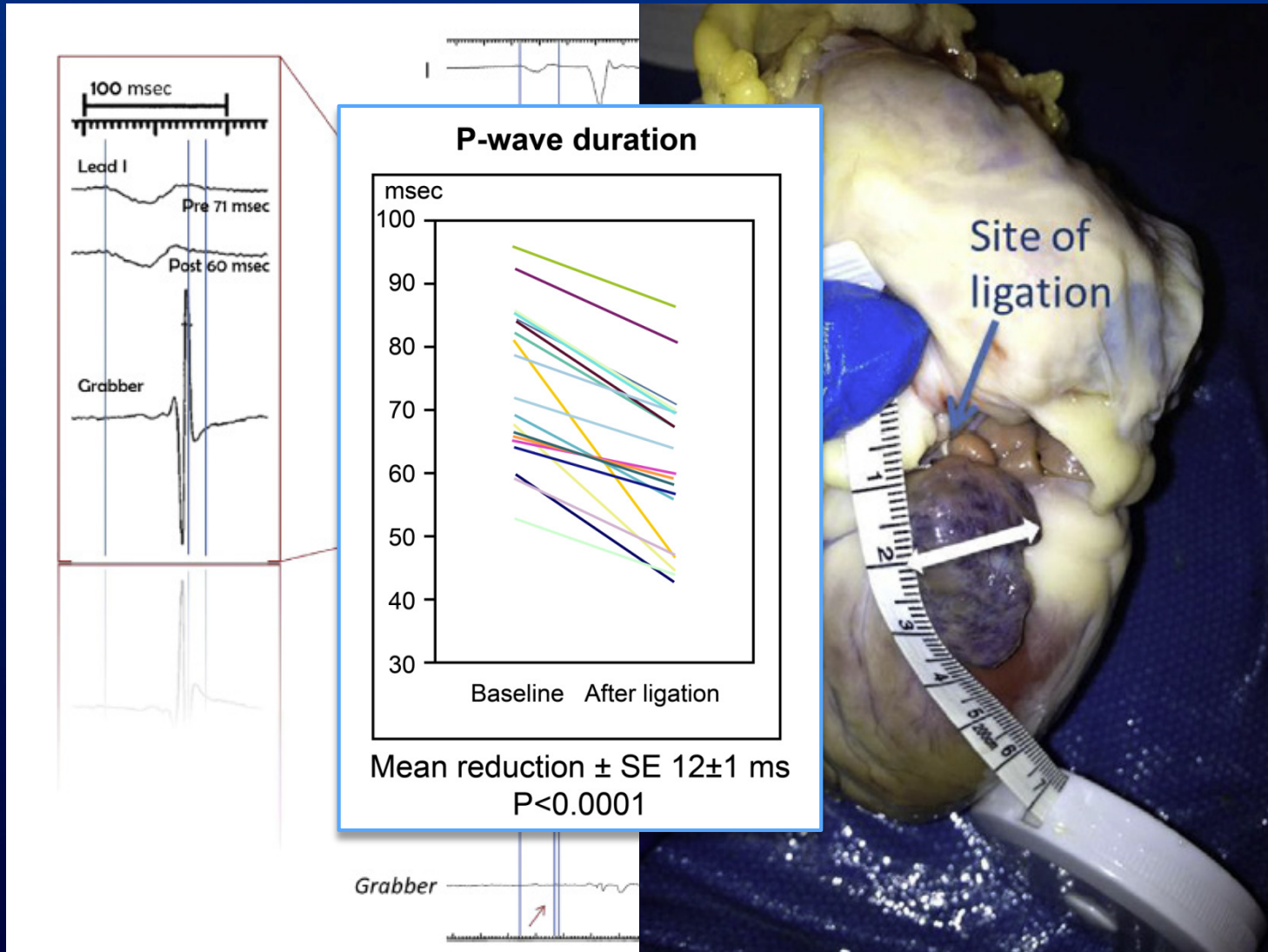


Epicardial only: Eliminate transeptal puncture
Eliminate heparin
Eliminate metal frame around suture
Electrogram navigation/confirmation



Friedman et al: JCE, 2009; Bruce et al: JCE, 2010

Atrial Remodeling



Syed...Friedman Translational Research; 165:365, 2015

Aegis Epicardial Human Early Feasibility

Patient No.	CHADS ₂ Score	Procedure Time (min)	Fluoro Time (min)	Technical Success	Ligating Devices Delivered	Adverse Event	Acute Closure*	1 Month Closure*
1	1	97	57.8	Yes	1	No	Yes	Yes
2	1	18	7.7	Yes	1	No	Yes	Yes
3	2	20	N/A	Yes	1	No	Yes	Yes
4	2	33	N/A	Yes	2	No	Yes	Yes
5	1	15	6.6	Yes	1	No	Yes	Yes
6	2	32	14.6	Yes	2	No	Yes	Yes
7	2	28	17.3	Yes	2	No	Yes	Yes

Average procedure time <35 minutes

First procedure 97 min, subsequent 15-33 minutes.

Fluoro time average 20.8 minutes (range 6.6 to 57.8)

Conclusions

- N/OAC is well established for stroke reduction in AF
- For patients who cannot or prefer not to take N/OAC, LAA closure is an increasingly attractive option
 - It is at least equivalent to warfarin
 - Benefit accrues over time due to reduction in bleeding complications
- Patient selection critical: CHADSVASC3 in US
- External ligation may have particular role for rhythm control and some anatomies