



31 GIORNATE CARDIOLOGICHE TORINESI

TURIN
October
24th-26th
2019



A.S.L. T03

Azienda Sanitaria Locale
di Collegno e Pinerolo



S. Luigi
Gonzaga

Orbassano (To)



WE DON'T HAVE ENOUGH EVIDENCE, WE TRUST OUR
EXPERIENCE - Part 1

Chairpersons: C. DI MARIO, A. LERMAN

Expert Discussants: M. LEONCINI, M. MARCOLONGO, F. MARIANI,
U. PARRAVICINI, A. ROGNONI, A. TRUFFA-GIACHET

**Two patients with Takotsubo and co-existent CAD:
“the solution”**

Giorgio Quadri

Interventional Cardiology Unit

ASL TORINO 3 Ospedale degli Infermi - Rivoli (TO)

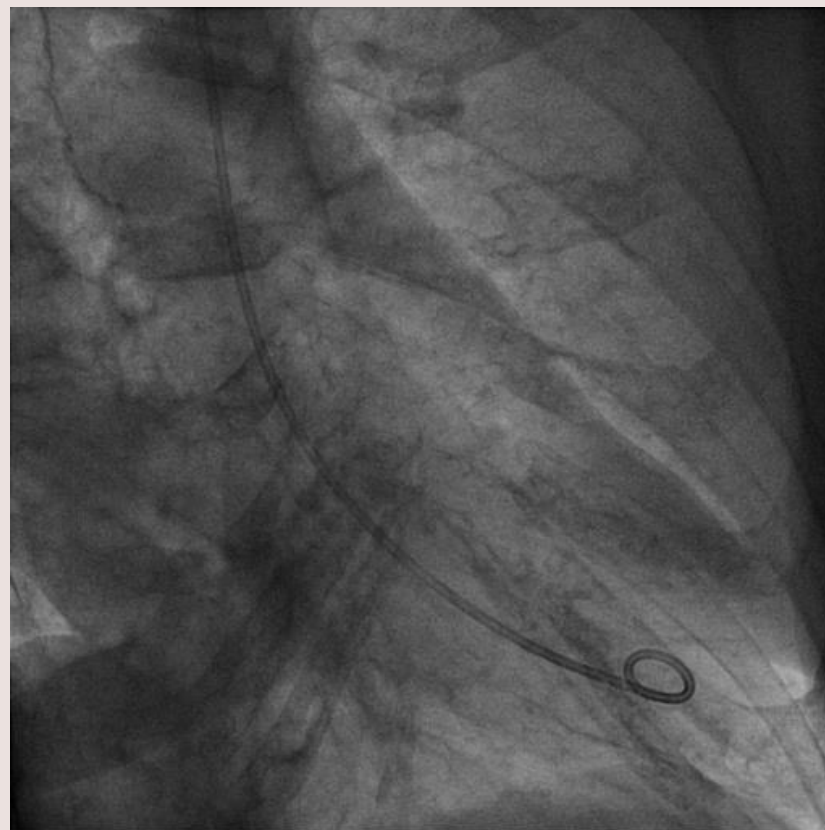
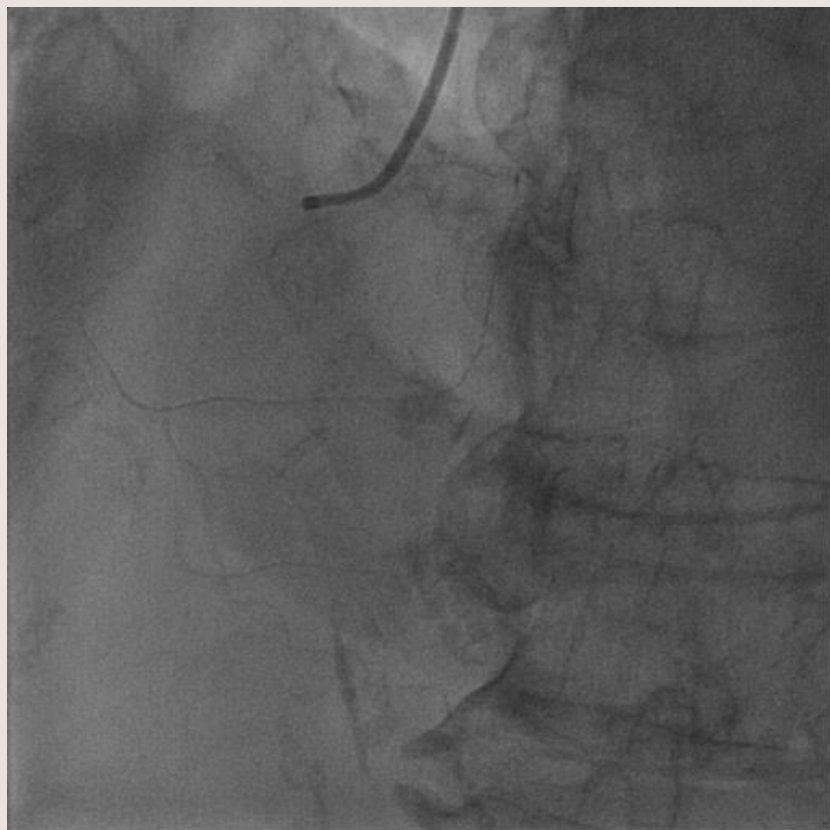
AOU San Luigi Gonzaga - Orbassano (TO)



31 GIORNATE CARDIOLOGICHE TORINESI

TURIN
October
24th-26th
2019

Marta





31 GIORNATE CARDIOLOGICHE TORINESI

TURIN
October
24th-26th
2019

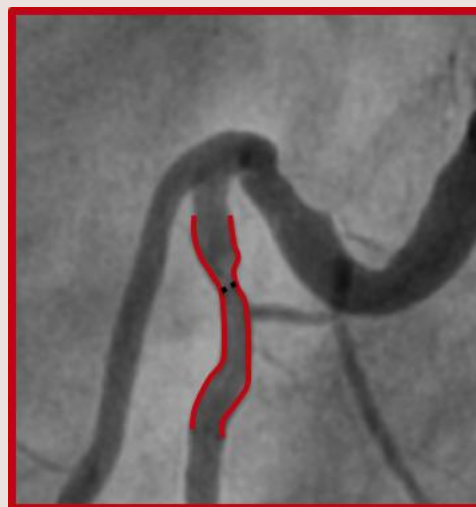
Marta

TAKOTSUBO?

YES

CAD TREATMENT ?

?





31 GIORNATE CARDIOLOGICHE TORINESI

TURIN
October
24th-26th
2019

Marta

RCA lesion considered as:

- Intermediate lesion in a stable coronary setting

**FUNCTIONAL EVALUATION
(FFR/iFR)**



31 GIORNATE CARDIOLOGICHE TORINESI

TURIN
October
24th-26th
2019

Marta

RCA lesion considered as:

- Non culprit lesion in ACS setting

COMPLETE REVASCULARIZATION
guided by
FUNCTIONAL EVALUATION
(FFR/iFR)
or by
ANGIOGRAPHY



31 GIORNATE CARDIOLOGICHE TORINESI

TURIN
October
24th-26th
2019

Marta

Therapy at discharge

Acetilsalicylic acid 100 mg

Metoprolol 50mg x 2

Ramipril 5 mg

Atorvastatin 40mg

Follow-up

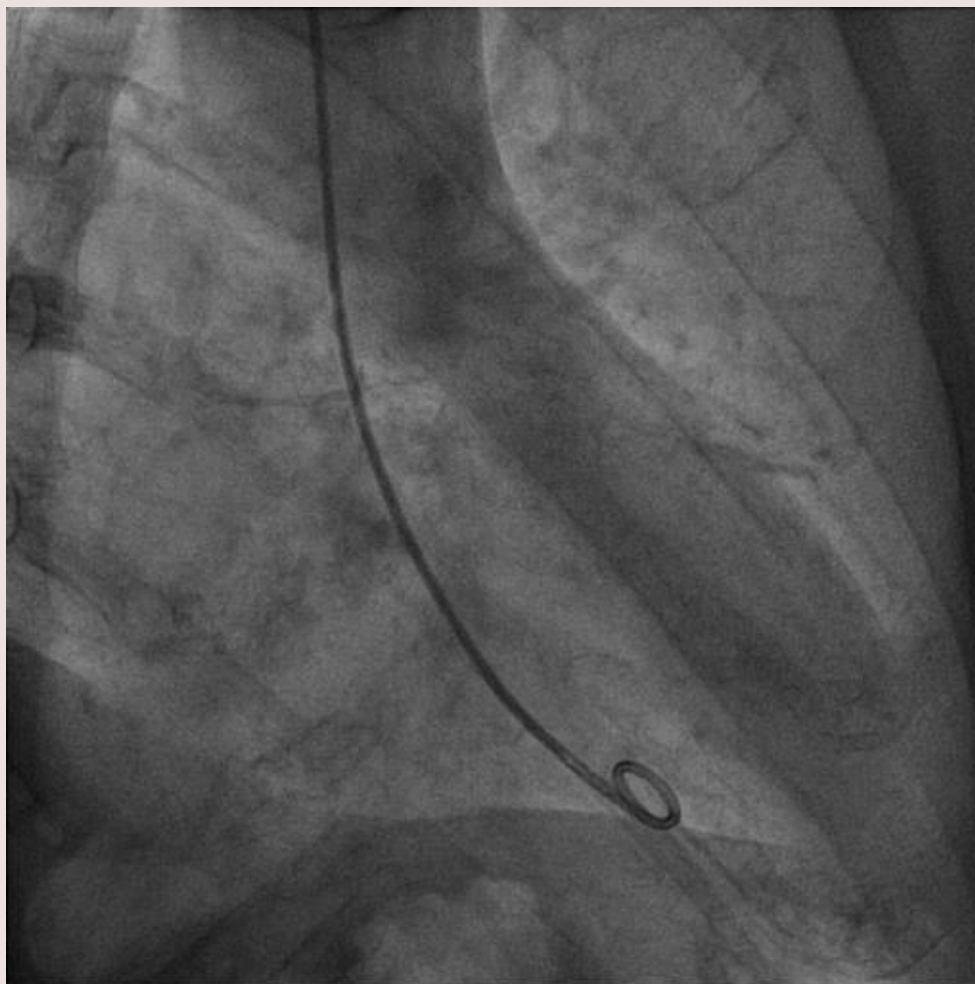
RCA functional evaluation in one month



31 GIORNATE CARDIOLOGICHE TORINESI

TURIN
October
24th-26th
2019

Marta

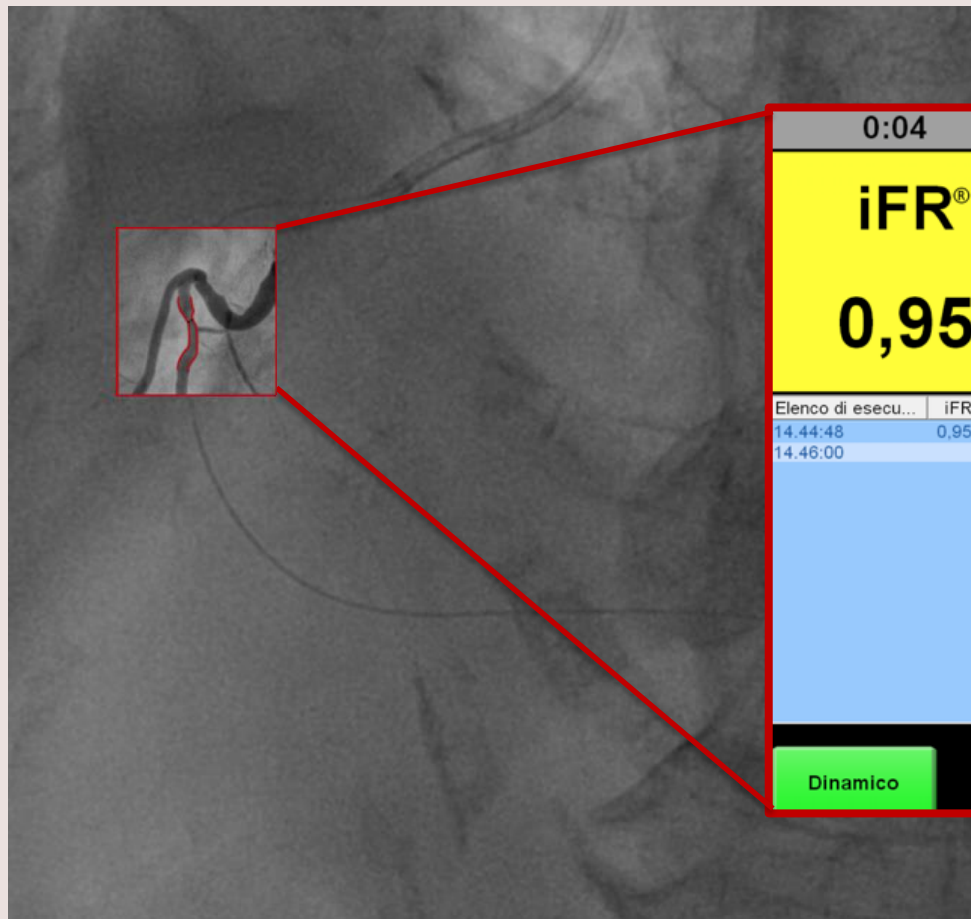




31 GIORNATE CARDIOLOGICHE TORINESI

TURIN
October
24th-26th
2019

Marta



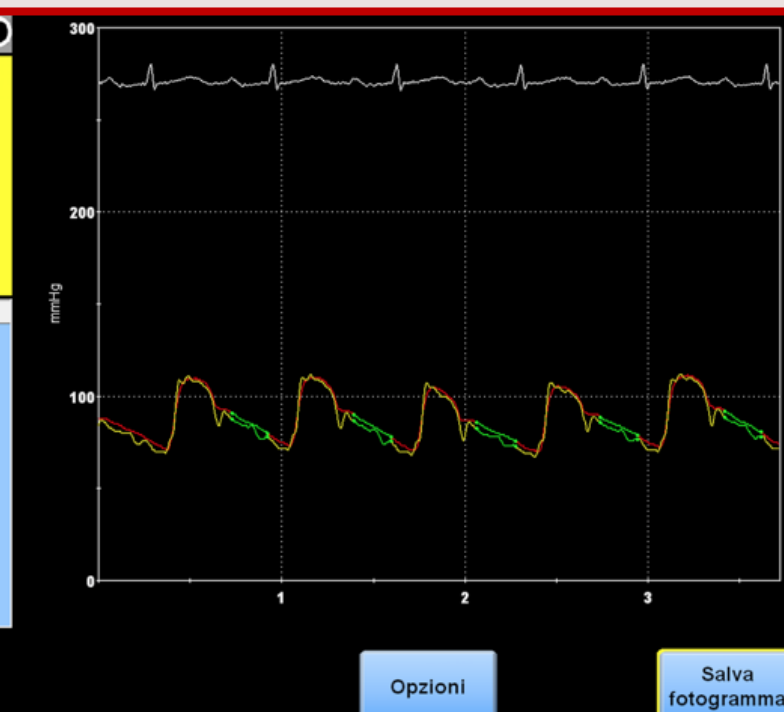
0:04

iFR[®]

0,95

Elenco di esecu...	iFR	FFR
14.44:48	0,95	
14.46:00		0,96

Dinamico

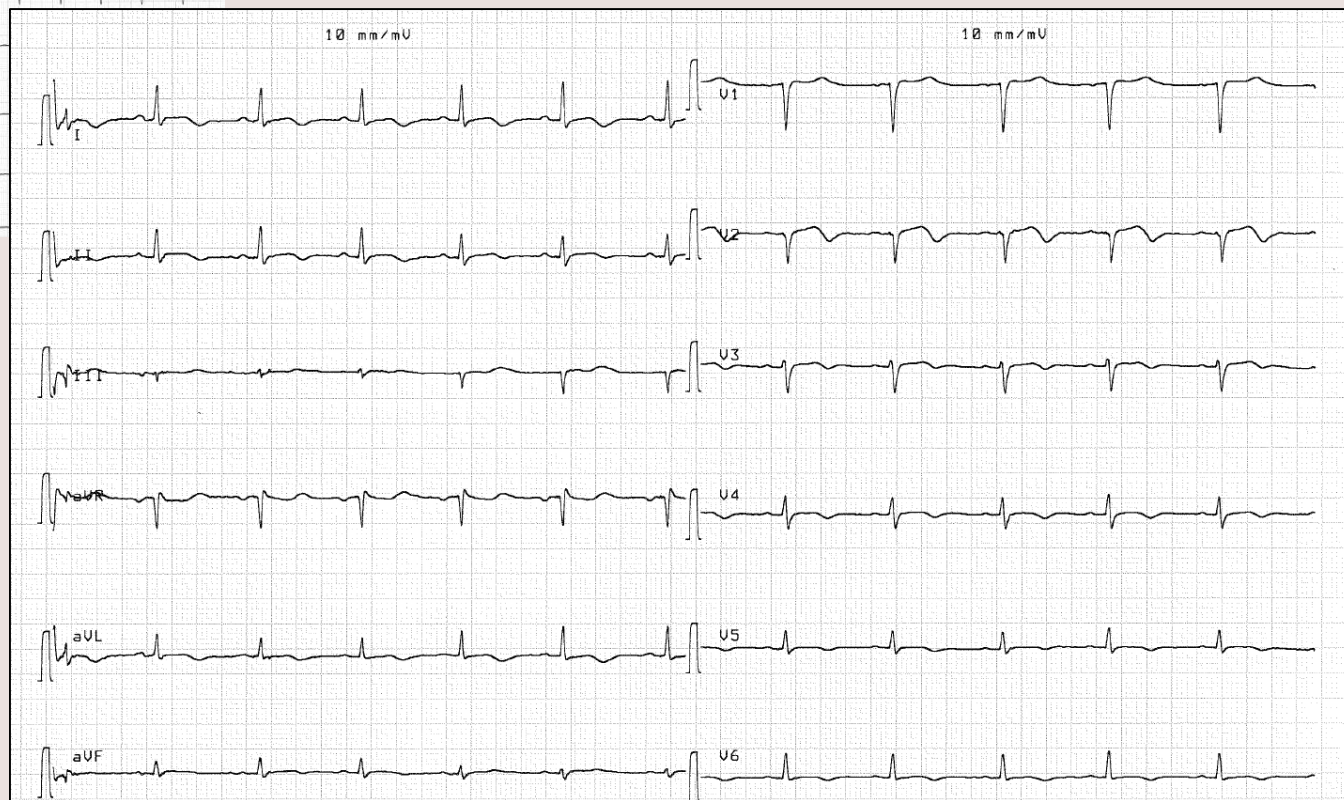
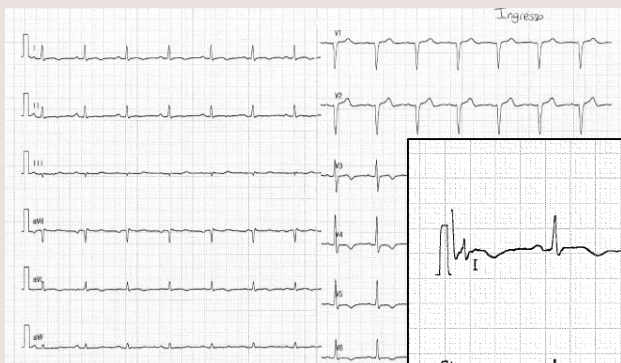




31 GIORNATE CARDIOLOGICHE TORINESI

TURIN
October
24th-26th
2019

Marta



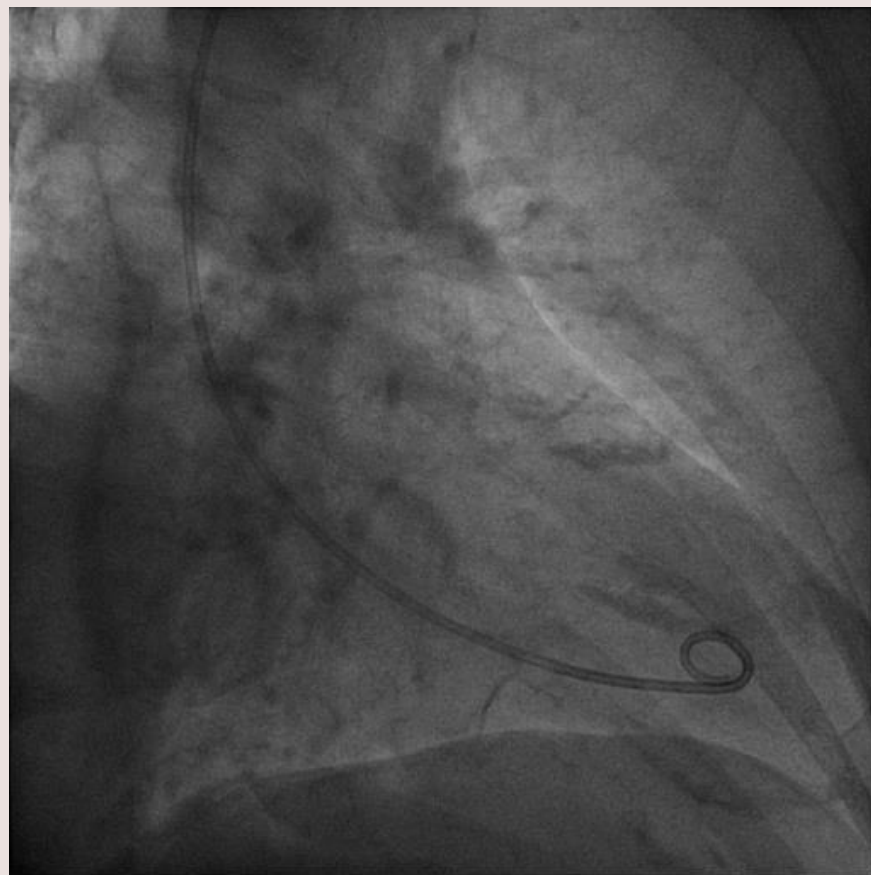
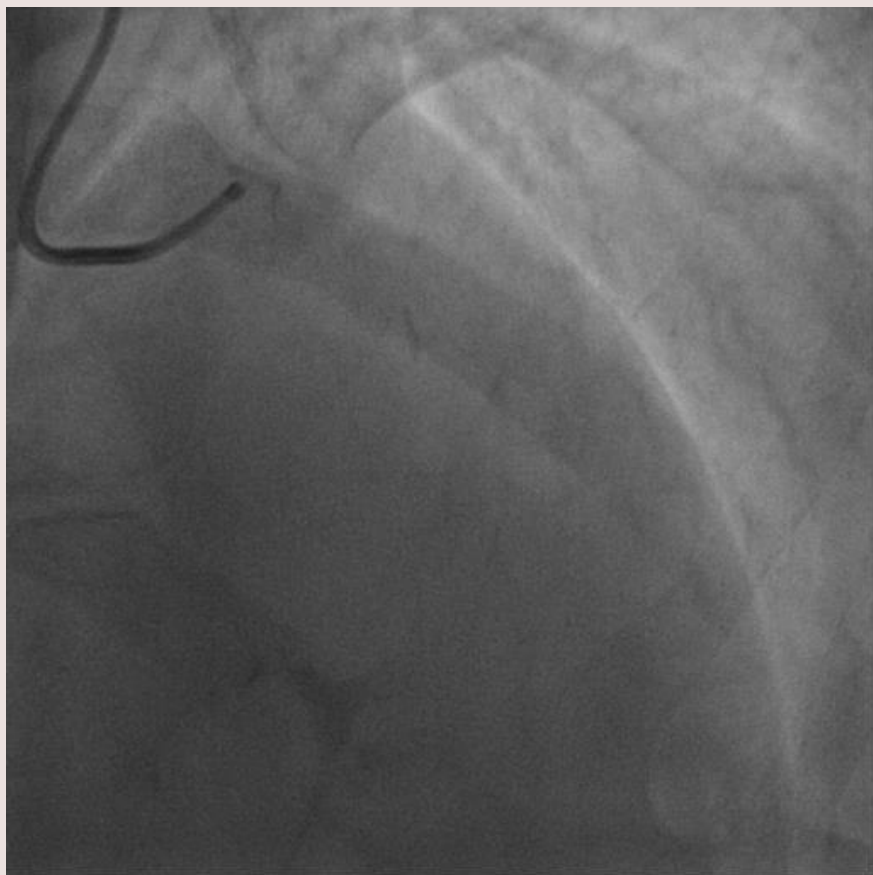
THERAPY UNCHANGED



31 GIORNATE CARDIOLOGICHE TORINESI

TURIN
October
24th-26th
2019

Giulia





31 GIORNATE CARDIOLOGICHE TORINESI

TURIN
October
24th-26th
2019

Giulia

TAKOTSUBO?

?

CAD TREATMENT ?

?





31 GIORNATE CARDIOLOGICHE TORINESI

TURIN
October
24th-26th
2019

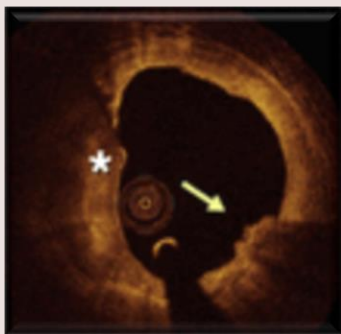
JACC: Cardiovascular Imaging

Volume 5, Issue 10, October 2012
DOI: 10.1016/j.jcimg.2012.04.010

Calcified Nodules

An Underrated Mechanism of Coronary Thrombosis?

Antonios Karanasos, Jurgen M.R. Ligthart, Karen T. Witberg and Evelyn Regar

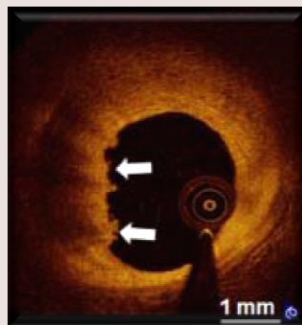


CALCIFIED NODULES

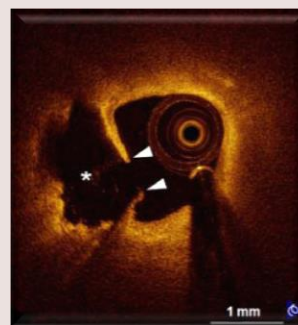
NIH Public Access
Author Manuscript
Published in final edited form as:
J Am Coll Cardiol. 2013 November 5; 62(19): . doi:10.1016/j.jacc.2013.05.071.

In Vivo Diagnosis of Plaque Erosion and Calcified Nodule in Patients with Acute Coronary Syndrome by Intravascular Optical Coherence Tomography

Haibo Jia, MD, PhD^{1,†}, Farhad Abtahian, MD, PhD¹, Aaron D Aguirre, MD, PhD¹, Stephen Lee, MD⁵, Stanley Chia, MD, MRCP¹, Harry Lowe, MBChB, PhD¹, Koji Kato, MD, PhD¹, Taisi Yonetsu, MD², Rocco Vergallo, MD¹, Sining Hu, MD¹, Jinwei Tian, MD, PhD¹, Hang Lee, PhD², Seung-Jung Park, MD, PhD, FACC¹, Yang-Soo Jang, MD, PhD, FACC^{1†}, Owen C. Raffel, MD^{1†}, Kyoichi Mizuno, MD, PhD, FACC^{2§}, Shiro Uemura, MD, PhD¹, Tomonori Itoh, MD³, Tsunekazu Kakuta, MD^{3¶}, So-Yeon Choi, MD, PhD¹, Harold L. Dauerman, MD, FACC^{1††}, Abhiram Prasad, MD, FACC^{1‡‡}, Catalin Toma, MD^{§§}, Iris McNulty, RN¹, Shaosong Zhang, MD, PhD¹, Bo Yu, MD, PhD¹, Valentine Fuster, MD, PhD, MAACC^{1¶¶}, Jagat Narula, MD, PhD, FACC^{1¶¶¶}, Renu Virmani, MD, FACC^{2¶¶¶}, and Ik-Kyung Jang, MD, PhD, FACC¹



PLAQUE EROSION



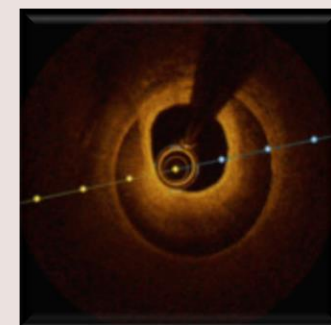
PLAQUE RUPTURE

CASE REPORT

Catheter Cardiovasc Interv. 2017;1-5.

First reported case of magnesium-made bioresorbable scaffold to treat spontaneous left anterior descending coronary artery dissection

Giorgio Quadri, MD^{1,2} | Francesco Tomassini, MD^{1,2} | Enrico Cerrato, MD^{1,2} | Ferdinando Varbella, MD^{1,2}



SCAD

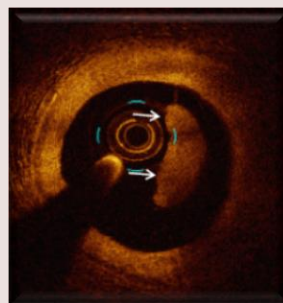
JACC: CARDIOVASCULAR INTERVENTIONS
© 2017 BY THE AMERICAN COLLEGE OF CARDIOLOGY FOUNDATION
PUBLISHED BY ELSEVIER

VOL. 10, NO. 24, 2017
ISSN: 1556-0132/1556-0132-00
https://doi.org/10.1016/j.jcin.2017.09.042

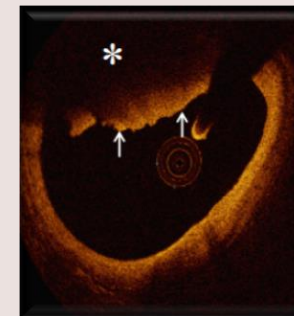
STATE-OF-THE-ART REVIEW

Intracoronary Optical Coherence Tomography 2018
Current Status and Future Directions

Ziad A. Ali, MD, DPhm,^{1,2} Keyvan Karimi Galougahi, MD, PhD,³ Akiko Maehara, MD,⁴ Richard A. Shlofmitz, MD,⁵ Ori Ben-Yehuda, MD,⁶ Gary S. Mintz, MD,⁷ Gregg W. Stone, MD⁸



WHITE THROMBUS



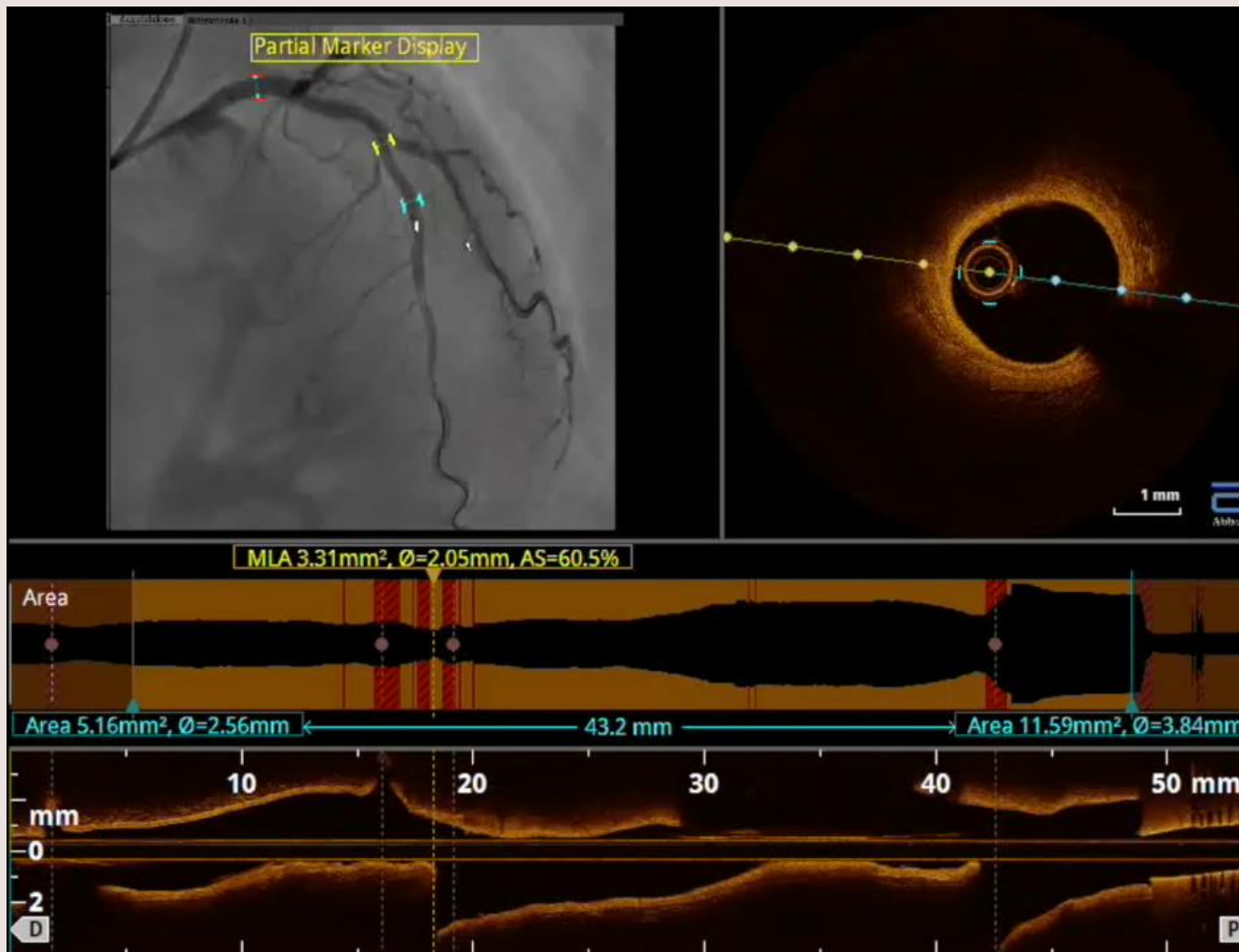
RED THROMBUS



31 GIORNATE CARDIOLOGICHE TORINESI

TURIN
October
24th-26th
2019

Giulia

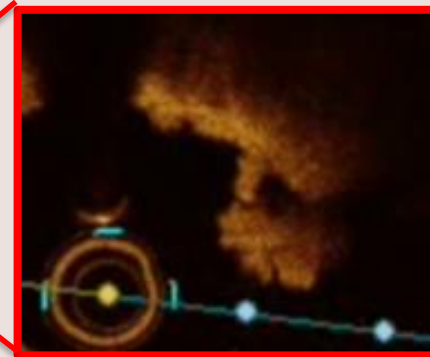
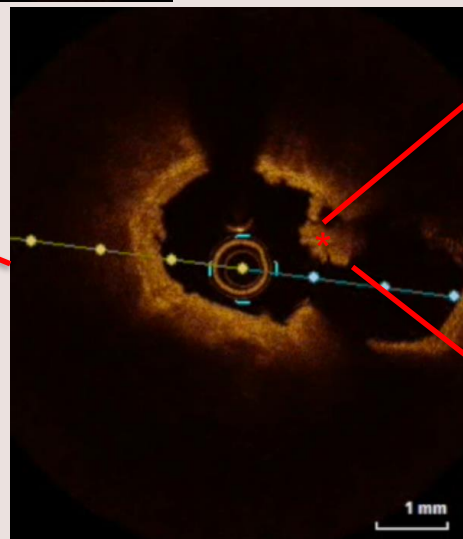
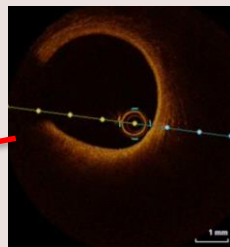
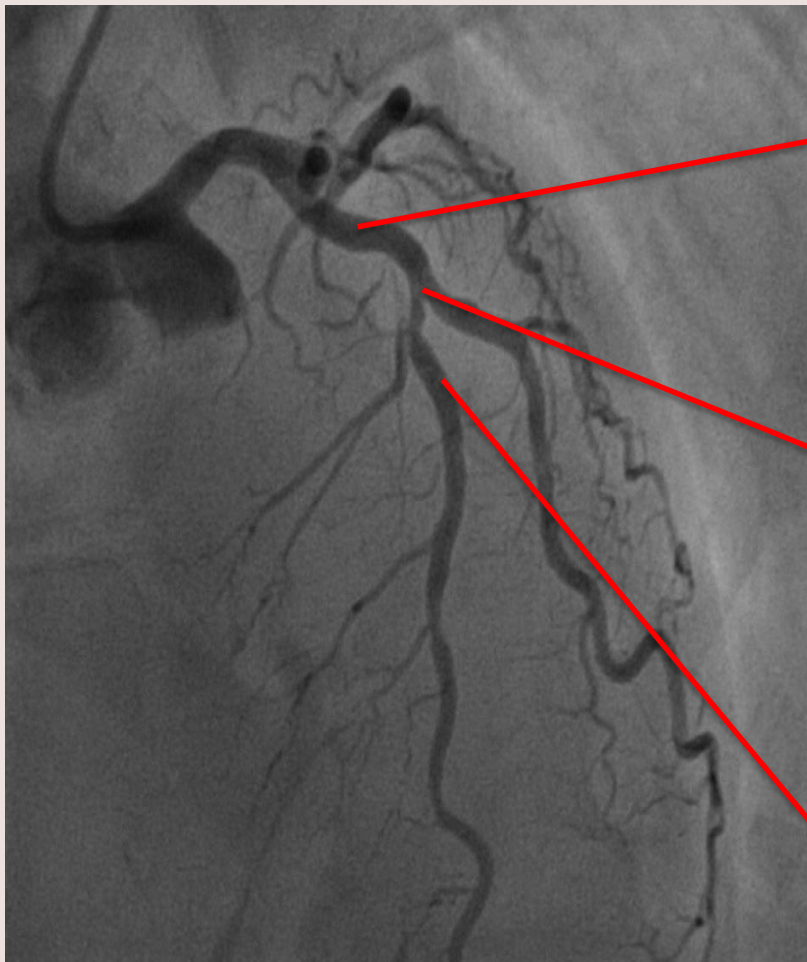




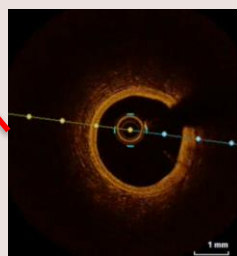
31 GIORNATE CARDIOLOGICHE TORINESI

TURIN
October
24th-26th
2019

Giulia



Thrombus

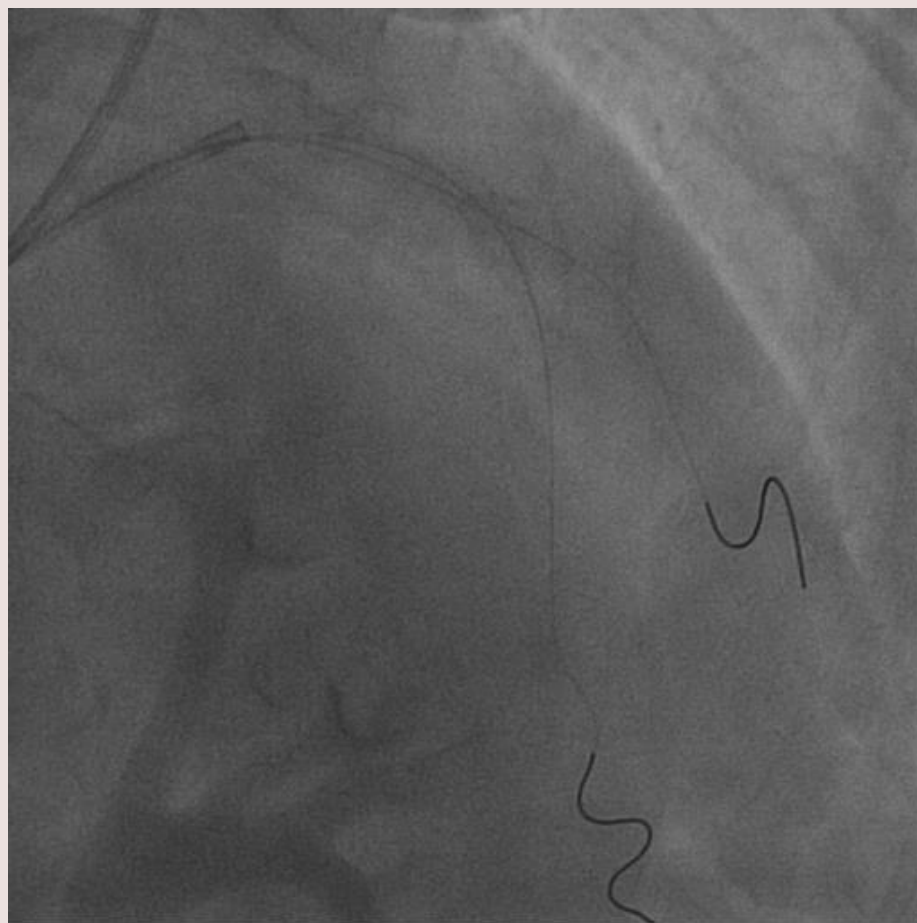




31 GIORNATE CARDIOLOGICHE TORINESI

TURIN
October
24th-26th
2019

Giulia

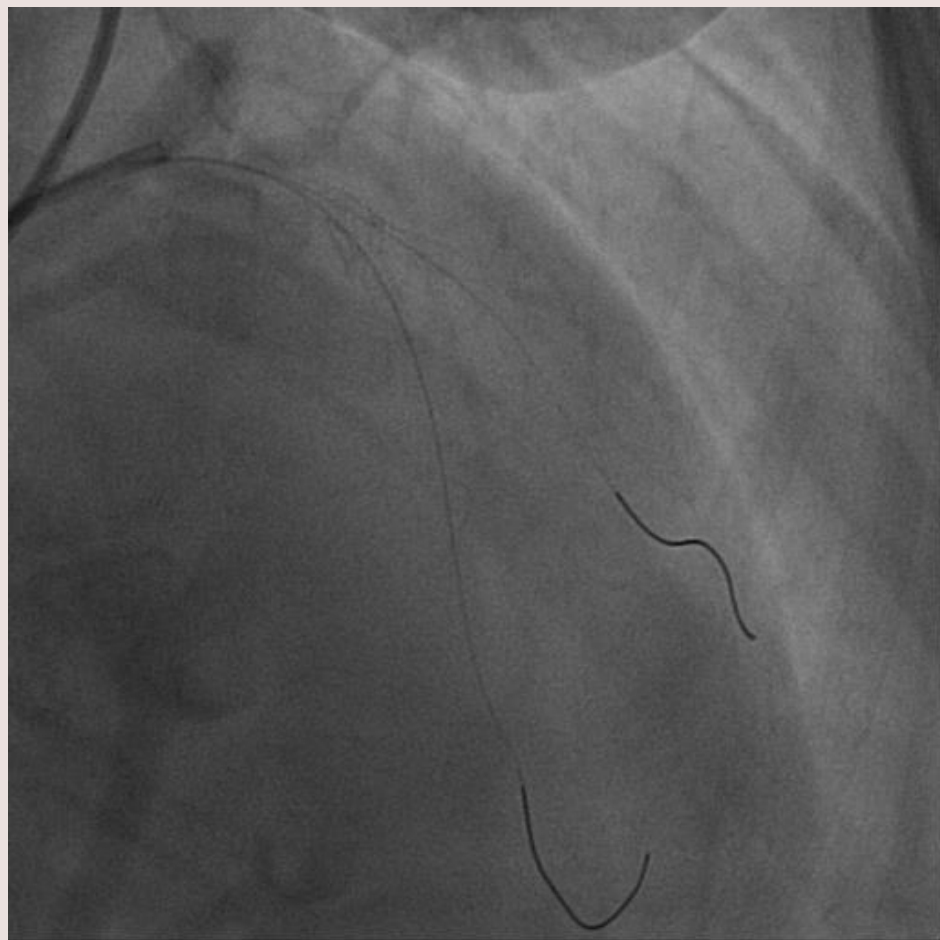
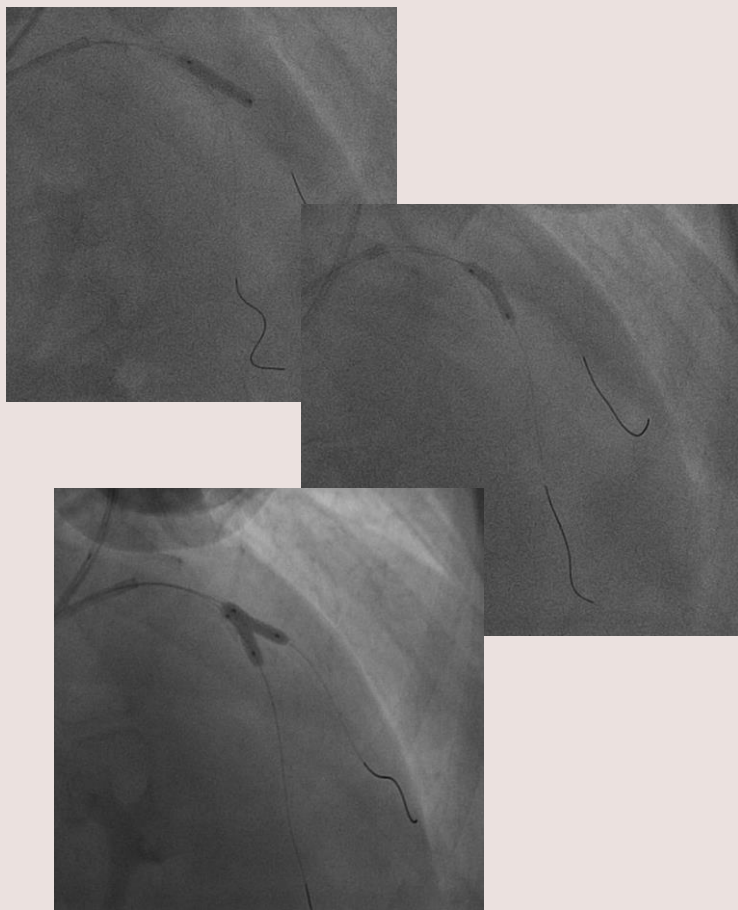




31 GIORNATE CARDIOLOGICHE TORINESI

TURIN
October
24th-26th
2019

Giulia

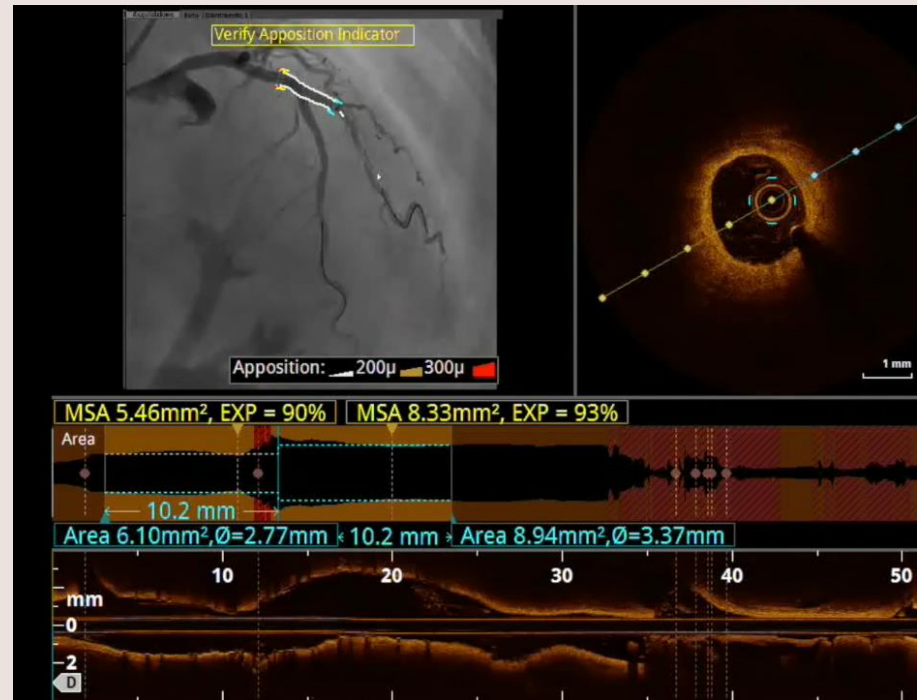
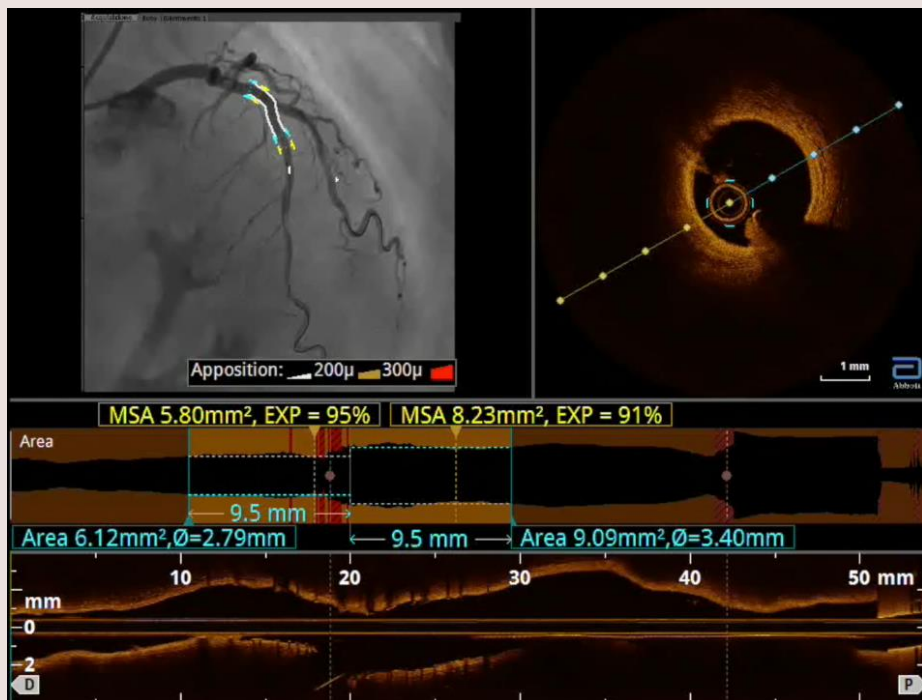




31 GIORNATE CARDIOLOGICHE TORINESI

TURIN
October
24th-26th
2019

Giulia

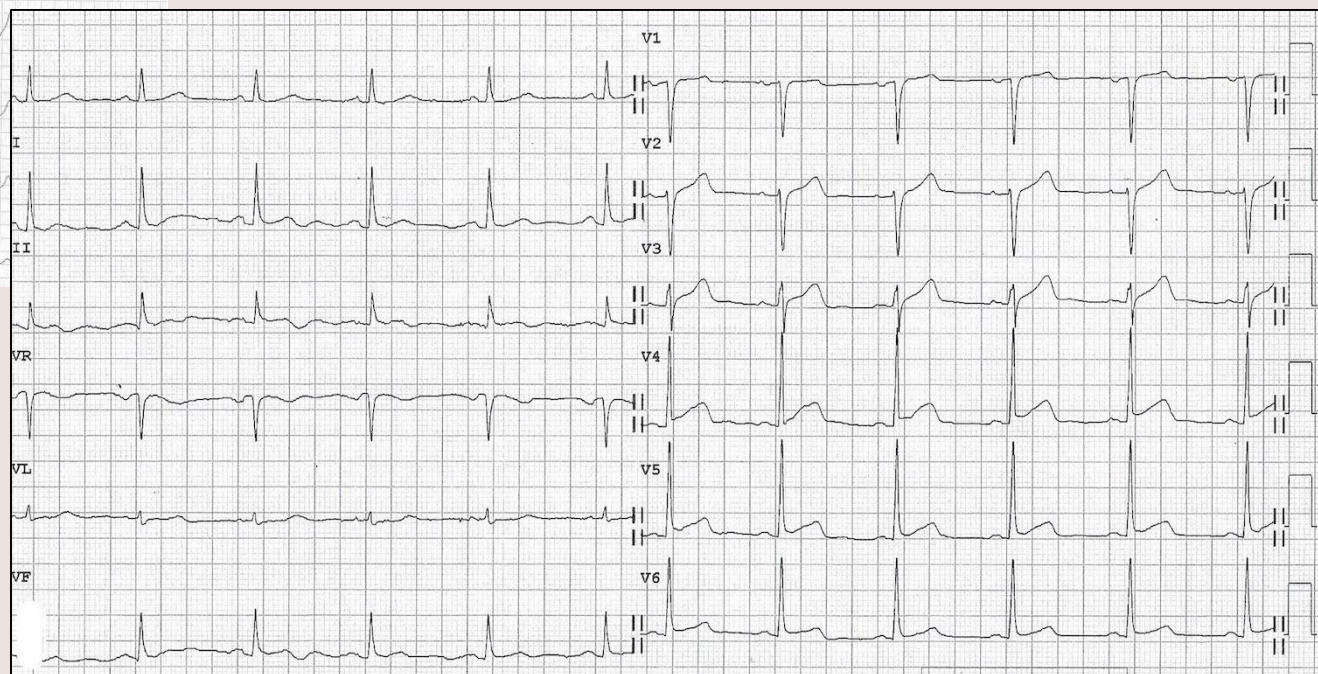




31 GIORNATE CARDIOLOGICHE TORINESI

TURIN
October
24th-26th
2019

Giulia



THERAPY: Acetilsalicylic acid 100 mg, ticagrelor 90 mg bid
ramipril 5 mg, atenolol 50 mg, atorvastatin 40 mg



31 GIORNATE CARDIOLOGICHE TORINESI

TURIN
October
24th-26th
2019

SUMMARY

Marta, 76 y.o woman

CV risk factors: none

CV history: silent

Comorbidities : depression

Therapy : paroxetine

- TAKOTSUBO
- CAD: intermediate RCA stenosis functionally non significant

EKG: VF → t wave inversion

L. ventricle: apical ballooning

Angio: 1-vessel disease
intermediate RCA stenosis

Giulia, 82 y.o woman

CV risk factors: hypertension

CV history: silent

Comorbidities: GERD

Therapy : ramipril 2.5 mg, esomeprazol

Anterior STEMI
with spontaneous/drug induced
recanalization

EKG: anterior ST-segment elevation

L. ventricle: apical ballooning

Angio: 1-vessel disease:
70-80% LAD stenosis



31 GIORNATE CARDIOLOGICHE TORINESI

TURIN
October
24th-26th
2019



A.S.L. T03

Azienda Sanitaria Locale
di Collegno e Pinerolo



WE DON'T HAVE ENOUGH EVIDENCE, WE TRUST OUR
EXPERIENCE - Part 1

Chairpersons: C. DI MARIO, A. LERMAN

Expert Discussants: M. LEONCINI, M. MARCOLONGO, F. MARIANI,
U. PARRAVICINI, A. ROGNONI, A. TRUFFA-GIACHET

**Two patients with Takotsubo and co-existent CAD:
“the solution”**

THANK YOU

Giorgio Quadri

Interventional Cardiology Unit

ASL TORINO 3 Ospedale degli Infermi - Rivoli (TO)

AOU San Luigi Gonzaga - Orbassano (TO)